

Mercer County Pennsylvania

Pre-K Counts

*Serving children three to five years of age
in your school district*



PARENT /COMMUNITY RESOURCE
HANDBOOK
2010/2011

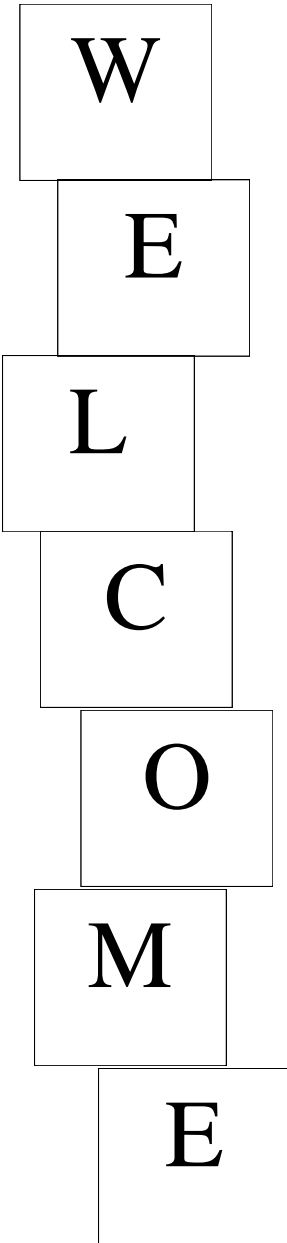
A Community Action Partnership of Mercer County program; Delegate
agency is Farrell Area School District

TABLE OF CONTENTS

INTRODUCTION	3
CLASSROOM DIRECTORY	5
STAFF DIRECTORY	5
PARENT VOLUNTEERS / MEETINGS	7
POLICY COMMITTEE	8
CONFIDENTIALITY STATEMENT	8
PARENT & STAFF RESPONSIBILITIES	9
PROGRAM GUIDELINES	10-17
FAMILY & COMMUNITY PARTNERSHIPS	10-11
EDUCATION	12
TRANSITION	13
DISABILITIES & MENTAL HEALTH	14
HEALTH & NUTRITION	15-16
TRANSPORTATION	17
COMMUNITY RESOURCE DIRECTORY	18
AGENCY INDEX	19-21
RESOURCE INDEX	22-28
RESOURCE DIRECTORY	29-47
DENTIST & DENTAL CLINICS/CENTERS	48-49
OBSTETRICIANS	49
PHYSICIANS & PEDIATRICIANS	50-52

W

elcome to the Mercer County PA Pre-K Counts Program.



You will always be your child's first and primary teacher and in many cases, this is your child's first school experience. We appreciate your willingness to allow Mercer County PA Pre-K Counts to share in this journey. It is the program's desire to make this a positive experience for the entire family.

You, as parents and guardians, are the most vital resource to the program and its success. You are encouraged to volunteer, attend meetings and trainings. Your involvement truly does make a difference.

This booklet is designed as a reference guide. Please read it carefully. If you have any questions or concerns, please talk to your child's teacher or your family advocate. We envision only success in your child's future.

Mercer County Head Start/PA Pre-K Counts, an affiliate of Community Action Partnership of Mercer County, an Equal Opportunity Employer, does not discriminate on the basis of race, color, national or ethnic origin, sex, disability or veteran's status in the administration of any of its educational programs or activities in accordance with applicable Federal Statutes and Regulations.



*Touching Families'
lives today
for a better tomorrow.*

IMPORTANT INFORMATION

CLASSROOM: _____

PHONE NUMBER (FAMILY ADVOCATE) _____

TEACHER: _____

CLASSROOM ASSISTANT: _____

CLASSROOM PHONE NUMBER: _____

HOURS/DAYS OF OPERATION: _____

PA PRE-K COUNTS CLASSROOM DIRECTORY

Farrell Pre-K Counts	724-509-1336
Hermitage Pre-K Counts	724-346-3690
Lakeview Pre-K Counts.....	724-376-7076
Mercer Pre-K Counts	724-662-5102 ext 3710
Reynolds Pre-K Counts.....	724-646-0088
Sharon Pre-K Counts	724-342-1352
Sharpsville	724-962-2830

Family Advocate (Michelle Comstock)	724-342-3734 ext. 16
Classroom Supervisor (Patti Strosser)	724-509-1347

STAFF DIRECTORY

DIRECTOR: Terri Lengyel

PROGRAM OPERATIONS DIRECTOR: Wendy King

Service Area Managers

Toni George	Family & Community Partnerships
Gayle Gunn	Fiscal
TBA	Disabilities/Mental Health
Kathy Mielecki	Health/Nutrition
TBA	Early Head Start
TBA	Network Administrator
Jennifer Zilla	Education

Main Offices

Pre-K Counts (John Hetra Bldg Farrell).....	724-346-4482
	Toll Free....866-284-1059
	Fax724-346-4431
Pre-K Counts (Elm Avenue Sharon).....	724-342-3734
	Toll Free....866-250-4527
	Fax724-342-3771

You Are Important to PA Pre-K Counts

Parent involvement is an integral part of a successful program for you and your child. It gives you the opportunity to communicate with other adults, and build strong, supportive relationships with staff members. An essential part of the Mercer County PA Pre-K Counts program is the involvement of parents in parent education, and operating activities.

You Can Become An Active Partner

There are many different ways that you can participate to make your PA Pre-K Counts experience successful. Opportunities for parent involvement include, but are not limited to:

- Attending parent meetings
- Participating in home involvement activities
- Being a classroom or field trip volunteer
- Participating in home visits
- Attending workshops, trainings, and informal “get-togethers”
- Preparing for education / employment opportunities
- Participating in the annual Program Self-Assessment
- Become a classroom substitute



NOTE: PARENTS CAN BECOME A PAID
SUBSTITUTE. IF YOU ARE INTERESTED,
CONTACT THE HUMAN RESOURCE
MANAGER AT 724-509-1341.

Parent Volunteers

It is only through the active participation of parents and guardians like you that the PA Pre-K Counts Program and your child will continue to grow.

- Volunteer in the classroom, even if you only have an hour or so to give.
- Volunteer to make decorations, etc. for center parties that take place throughout the year.
- Volunteer to make phone calls to ask about possible activities for the children.
- Volunteer to spend the day with your child in the classroom.

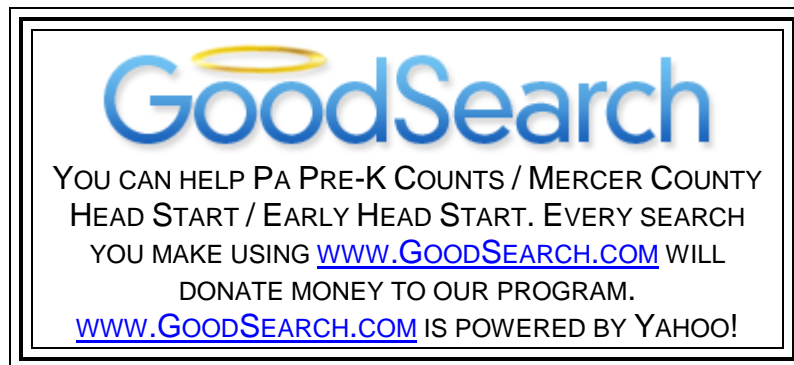
Parent Meeting Schedule

Parent meetings are held on a regular basis. Attending these meetings provides all parents with the opportunity to work with staff, develop activities for both children and parents to learn more about the PA Pre-K Counts Program and develop strong leadership skills. A schedule of these meetings will be sent home through your child's classroom. The classroom monthly newsletter will also address the events, dates and times that the meetings are to take place. Your attendance is greatly needed and welcomed!



Confidentiality

THE MERCER COUNTY PA PRE-K COUNTS PROGRAM BELIEVES IN THE INTEGRITY OF ALL OUR CLIENTS AND WILL DO EVERYTHING POSSIBLE TO ENSURE THAT ALL INFORMATION OBTAINED ON THE FAMILIES ENROLLED IN THE PROGRAM WILL BE KEPT IN THE STRICTEST CONFIDENCE. YOU WILL BE ASKED TO SIGN A CONFIDENTIALITY STATEMENT AT YOUR CHILD'S PARENT ORIENTATION.



MERCER COUNTY PA PRE-K COUNTS

PARENTS' PROGRAM RESPONSIBILITIES

By enrolling your child in the PA Pre-K Counts program this year, you have shown that you are a concerned parent who desires the best possible start in life for your child. This commitment carries the following responsibilities:

As this child's parent/guardian of a center-based child, I will:

- Daily spend at least 30 minutes of quality time together.
- Set a consistent bed-time and routine on school nights.
- Attend monthly Parent Meetings and keep current on PA Pre-K Counts activities and opportunities.
- Participate in scheduled parent trainings and male involvement activities.
- Set individualized goals for your child with your child's teacher.
- Call the classroom before class start time to let staff know if my child will be late or absent so the lunch count will be accurate.

PA Pre-K Counts requires all center-based parent/guardians to:

- Develop a Family Advancement Plan, assisted by staff (within 45-60 days of enrollment) and updated as needed.
- To pick-up their child when ill, in the classroom, within one(1) hour of notification.
- To provide a written excuse when a child is absent from school. A doctor's excuse is required if a child had a contagious illness or was absent for surgery.
- Provide current physicals and dental exams for each child.

STAFF RESPONSIBILITIES

All PA Pre-K Counts Staff will:

- Abide by the Mercer County PA Pre-K Counts confidentiality policy.
- Report any child abuse, whether suspected or verified, following Mercer County PA Pre-K Counts policies and procedures.
- Be knowledgeable of all Community resources and refer families as necessary.

PA Pre-K Counts Classroom Staff will:

- Notify parents of field trips taken during the school year.
- Notify parents whenever their child is injured in the classroom.
- Complete a minimum of one (1) social service home visits each year.
- Complete a minimum of two (2) parent-teacher conferences per year in addition to the home visit.

PROGRAM GUIDELINES

FAMILY AND COMMUNITY PARTNERSHIP

I. Attendance ~

It is very important for your child to attend school on a regular basis for several reasons. It allows your child to become familiar with routines, to learn new skills and develop the ability to work and play with other children individually and in a group.

Your child's attendance **should** be kept above 85%. Failure to do so MAY result in your child being withdrawn and placed on the waiting list. If your child is absent, please send in an excuse to your child's classroom teacher.

II. Custody ~

Custody agreements and court orders must be on file at the center in order for PA Pre-K Counts to abide by the agreement. Please give a copy of all current custody orders to your Family Advocate.

III. Family Support Staff ~

A family advocate will meet with you on a regular basis throughout the year a minimum of one (1) time, more if needed.

The Family Advocate will:

- Discuss your participation in program activities.
- Help you identify strengths and establish goals by developing a Family Advancement Plan.
- Offer information and referrals to community agencies based on the family needs.
- Provide literacy information and materials for the child and family.
- Serve as a support person for your family.

If you are unable to keep a scheduled home visit, please contact your family advocate as soon as possible to arrange another time.

IV. Home Visiting Safety ~

Staff will always schedule home visits with you in advance. If an emergency or unforeseen situation would occur, please notify the staff immediately if you are unable to keep your home visit. Please maintain an accessible pathway to the home, such as clearing the walkway of snow. Please secure pets so they are not running loose in the yard or house. If a home visit is scheduled in the late afternoon or evening, please leave a porch light on for staff.

V. Smoke & Tobacco Free Environment Policy ~

To promote a healthy environment for families, and in compliance with federal regulation, Mercer County PA Pre-K Counts provides a smoke and tobacco-free environment, designed to eliminate smoke and tobacco exposure to children, parents, and staff in our program. **We request that parents, family and others present not smoke or use tobacco products during home visits or on program property.** We also ask that cigarettes and other tobacco related items not be visible during home visits. We appreciate your cooperation in supporting this initiative and joining us in providing the healthiest environment possible for everyone involved in our program.



***BEING A FATHER IS A BIG RESPONSIBILITY
THAT BRINGS BIG REWARDS!***

EDUCATION

I. Curriculum ~

Mercer County PA Pre-K Counts classrooms utilize the Creative Curriculum for Preschoolers, a nationally recognized curriculum for 3-5 year old children.

This curriculum allows for a variety of developmentally appropriate experiences in the classroom setting, while maintaining the flexibility required for addressing the individual needs of each enrolled child. Your child will have the opportunity to participate in whole group, small group and individual learning activities daily. Additionally, he/she will experience both teacher led and child initiated learning opportunities. Each parent is invited to volunteer in their child's classroom often, which is the best way to learn about and understand our curriculum. You will also be a vital part of setting and updating individual goals for your child throughout the year.

II. Assessment ~

Ongoing observation and assessments are completed on each child throughout the year. Assessment results are shared with parents at two parent/teacher conferences per year and at other times upon parent request. Child assessment information will only be shared with the parents or legal guardians of each child.

III. General Information ~

Arrival: Students arrive at school according to their classroom schedules. The parent must accompany the child to the classroom. Children are not permitted in the classroom before that site's scheduled start time. Also, children must be picked up at the sites end time. Classroom staff cannot be responsible for children dropped off early or picked up late.

Clothing: Please choose comfortable clothing which allows your child to play and create without being afraid of "getting dirty." Going outside is part of our daily curriculum. Please dress your child appropriately for the weather, including hats, gloves and boots, when necessary. Rubber soled shoes, preferably sneakers, are recommended. A backpack or book bag is beneficial but not required.

Field Trips: Mercer County PA Pre-K Counts classrooms schedule field trips periodically throughout the year. The program staff depend on parents to assist in the planning and to support the teachers during these trips. Signed permission slips are required for a child to participate in a field trip.

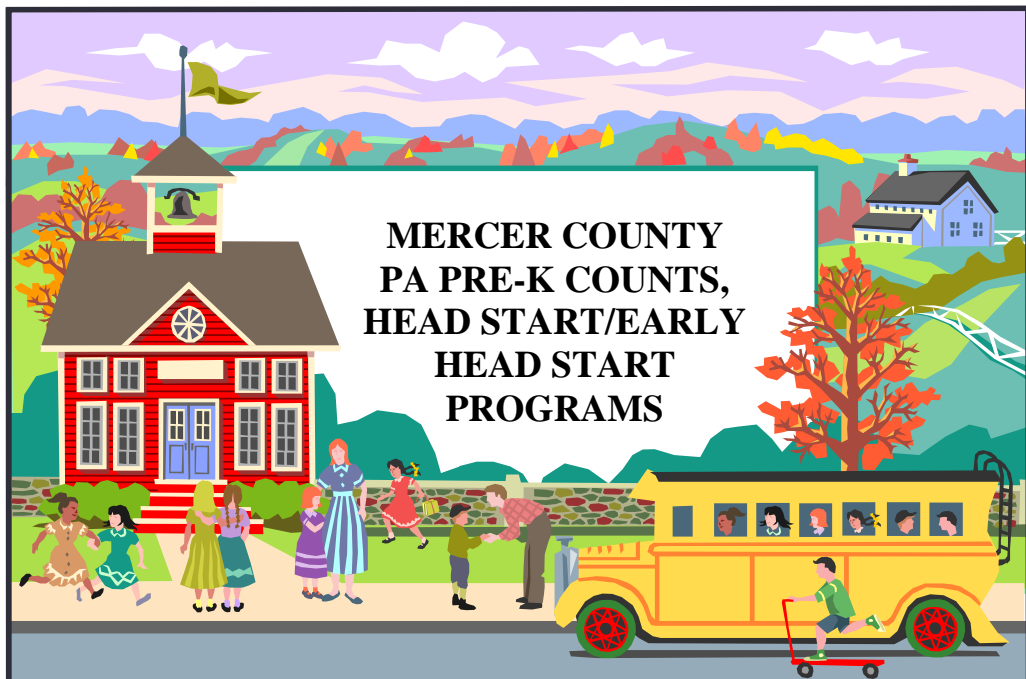
WE ENCOURAGE YOU TO STAY ACTIVELY INVOLVED IN YOUR CHILD'S EDUCATION! YOU ARE YOUR CHILD'S FIRST AND MOST IMPORTANT TEACHER!!

TRANSITION

Transition is the process of moving your child successfully from one program to another.

I. PA Pre-K Counts Transition ~

PA Pre-K Counts children begin their transition to Kindergarten or to other school settings the very first day of enrollment. Visits to Kindergarten classrooms, classroom activities, kindergarten registration, parent meetings and school district meetings help make this a smooth transition.



DISABILITIES AND MENTAL HEALTH

Enrollment opportunities in the PA Pre-K Counts program are available for children with disabilities in need of related services. Related services include, but are not limited to speech therapy, specialized instruction, occupational therapy, etc. Placement options such as Dual Programming may also be available.

Mercer County PA Pre-K Counts currently has strong collaborations with county Early Intervention programs for the provision of evaluations and services. Parental permission must be obtained.

I. Screenings ~

PA Pre-K Counts/Head Start:

All PA Pre-K children will be screened once enrolled in the PA Pre-K Counts Program. Each child will be screened in the following areas: motor, cognitive, speech, language, vision, behavior and hearing. The results will be mailed to parents with recommendations as needed.

II. Behavior Management Policy ~

A Behavior Management Policy has been created to ensure that all children enrolled in our program have the opportunity to learn in a safe, positive and nurturing classroom environment. Your child's teacher or family advocate will review this policy with you upon enrollment into the program. The policy is very specific and we ask that you read it carefully.

III. Mental Health Referrals & Resources ~

Mercer County Head Start/Early Head Start and PA Pre-K Counts currently have a strong relationship with a county mental health agency. If a family/child enrolled in our PA Pre-K Counts Program is in need of services or would like to arrange for a consultation with our Mental Health Consultant you can contact your Classroom Teacher, Family Advocate or the Disabilities/Mental Health Manager.



I am free to be the best I can be.

HEALTH AND NUTRITION

I. Physicals & Dental Exams ~

Our program requires that all PA Pre-K Counts children have a current physical and dental exam. They must be updated at least once a year. Exams are due to the health office before the first day of class.

II. Dental Hygiene ~

Dental hygiene is an important part of the PA Pre-K Counts Program. Dental hygiene is practiced after each meal and snack. Poor dental hygiene greatly affects a child's health, nutrition and speech.

III. Illness ~

If your child looks or is acting sick, please keep them home! These are signs that a child is coming down with a cold or infectious disease. These symptoms are usually contagious, so keeping the child at home will safeguard both your child and others in the classroom and at play groups. If the early stage symptoms are treated at once, the period of absence from school will be shortened.

Symptoms such as those listed below are also **obvious reasons to keep your child home:**

- Fever of 101 F orally or higher. (If your child is taking medication to keep a fever down, **they should not come to school.** They must be free of fever for 24 hours.)
- Severe nasal congestion/runny nose
- Red, itchy or runny eyes
- Persistent sneezing or coughing
- Rash or sore throat
- Earache
- Toothache
- Diarrhea
- Vomiting
- Severe headache
- Asthma flare-ups

Whenever your child is unable to attend school, please phone the classroom teacher by 9:00 a.m. and report the reason for absence. If the absence is due to a contagious illness, **notify staff immediately.** **Any child who has been absent due to a contagious illness or recovering from surgery, must have a doctor's excuse to return to school.**

Lice – Children with live lice will be sent home immediately. We will be following the nit policy of **your** school district, which for most is a “zero nit policy”. Children with nits will be sent home based on school policy. Children may return after they have been checked by the Pre-K nurse.

**** Children being sent home must be picked up within 1 hour of notification.**

IV. Medication ~

Most medications may be given before or after school hours and rarely need to be given during the Pre-K day. In the rare event that a child needs medications during the program day, the parent is required to contact the Head Start/Pre-K Health & Nutrition Manager and set up a time to meet and discuss medication administration and complete the required paperwork. This must be done at least several days prior to the child needing any medication.

MEDICATIONS SHOULD NEVER BE SENT TO SCHOOL WITH YOUR CHILD.

V. Meals ~

All PA Pre-K Counts children receive a snack and a lunch at no cost to the family. These meals are served family style and children are encouraged, but never forced, to try new items. Food is never used as a punishment or reward. Snack does not take the place of breakfast. Please have your child eat breakfast before coming to school.

Please let staff know if there are specific ethnic foods you would like to see served in the program. If your child has special dietary needs such as an allergy to milk this must be documented by a physician on a prescription pad and given to the Head Start/PA Pre-K Counts Health & Nutrition Manager. The doctor must also include the substitution for the restricted food. It can be faxed to 724-346-4431.

All meals served to participants under the Child and Adult Care Food Program are served at no separate charge regardless of race, color, sex, age, handicap or national origin. There is no discrimination in admissions policy, meal service or use of facilities. Any person who believes that he or she has been discriminated against in any USDA related activity should write to the Secretary of Agriculture, Washington D.C. 20250.



VI. Child Abuse ~

The Mercer County PA Pre-K Counts staff are mandated reporters according to the Child Protective Service Law. When any staff has reasonable cause to suspect a child is being abused, Childline will be called. Our program encourages parents who suspect child abuse to contact Childline at 1-800-932-0313.

TRANSPORTATION

I. Releasing a Child from PA Pre-K Counts Program ~

When your child is picked up at the classroom it MUST be a person that is listed on the Emergency Contact Form. He/she must be 18 years of age or older and have photo identification. If the person who attempts to get the child is not listed on the Emergency Contact Form PA Pre-K Counts staff will not let the child go to that adult.

If additions/deletions need to be made to the Emergency Contact Form at any time you need to call your Family Advocate to make an appointment to do so.

You may not call into the classroom or to the Family Advocate to add/delete people. It must be done in person so a new Emergency Contact Form can be completed.

It is your responsibility to keep all phone numbers and addresses current for all persons on the Emergency Contact Form. Changing a phone number or an address CAN be done over the phone to the classroom or to the Family Advocate.

II. Children Not Picked Up On Time ~

When children are not picked up by the designated time, the following procedure will be followed:

1. We will attempt to reach you by telephone. If we are unable to reach you, we will notify the individual(s) you have listed on your "Emergency Contact Sheet" to come and pick up your child.
2. If we are unable to reach you by 3:30 p.m., or an emergency contact individual, the local authorities will be called and **Children and Youth Services** will be called.

III. Cancellations ~

In case of inclement weather or unforeseen emergencies the PA Pre-K Counts classrooms will follow your local school district.

If your school district's classes are cancelled PA Pre-K Counts Program will be closed. If there is a two-hour delay, PA Pre-K Counts is on a two-hour delay also. Please listen to the following radio and television stations:

Radio: WPIC 790 (Sharon)
Y-103 102.9 (Sharon/Youngstown)
95.1 (Grove City)
WGRP 107.1 (Greenville)

Television: Channels 21 NBC, 27 CBS or 33 ABC (Youngstown)



Community Resource Directory 2010-2011

Created exclusively for Mercer County
PA Pre-K Counts families and staff.

We encourage you to use this as a quick reference guide in researching services best suited to your needs. Mercer County PA Pre-K Counts makes no guarantees regarding the policies or quality of services provided by the agencies and organizations listed.

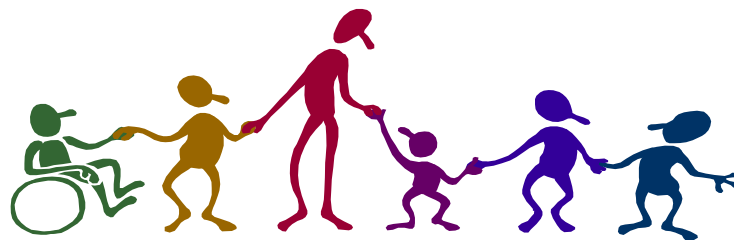
Report changes/corrections by calling 724-342-3734 x10.

AGENCY INDEX

AMERICAN RED CROSS	29
ANGEL FOOD MINISTRIES	29
ARK HOUSE – SOUTHWEST GARDENS	29
ASSOCIATION FOR CHILDREN WITH LEARNING DISABILITIES	29
AW/ARE, INC.	29
BETTER BUSINESS BUREAU OF WESTERN PENNSYLVANIA	30
BLUE CROSS/BLUE SHIELD SPECIAL CARE	30
BUREAU OF PA CHILD SUPPORT ENFORCEMENT	30
CATHOLIC CHARITIES COUNSELING & ADOPTION AGENCY	30
CHILD CARE INFORMATION SERVICES (C.C.I.S.)	30
CHILDREN’S AID SOCIETY OF MERCER COUNTY	30
CHILDREN’S CENTER OF MERCER COUNTY	30
CHILDREN’S HOSPITAL OF PITTSBURGH	31
CITY RESCUE MISSION	31
CLARK VOLUNTEER FIRE DEPARTMENT	31
COMMUNITY ACTION PARTNERSHIP OF MERCER COUNTY	31
COMMUNITY COUNSELING CENTER OF MERCER COUNTY	31
COMPREHENSIVE CHILDREN & FAMILY SERVICES	31
CONSUMER CREDIT COUNSELING SERVICES OF MERCER COUNTY	31
DEPENDABLE TAXI (PHIL’S)	32
DIVERSIFIED FAMILY SERVICES	32
DOMESTIC RELATIONS	32
E.R.A.S.E. (ANTI-DRUG COALITION)	32
FAMILY PLANNING SERVICES OF MERCER COUNTY	32
FARRELL AREA SCHOOL DISTRICT’S EARLY INTERVENTION PROGRAM	32
FARRELL FIRE DEPARTMENT	33
FREDONIA VOLUNTEER FIRE DEPARTMENT	33
GERALDINE APARTMENTS	33
GOOD SHEPHERD CENTER, INC.	33
GRACE COMMUNITY FOOD PANTRY	33
GREENVILLE AREA LEISURE SERVICES ASSOCIATION (GALSA)	33
GREENVILLE FIRE DEPARTMENT	33
GREENVILLE LITERACY COUNCIL	34
GREENVILLE PUBLIC LIBRARY	34
GROVE CITY COLLEGE	34
GROVE CITY COMMUNITY LIBRARY	34
GROVE CITY EDUCATION CENTER FOR ADULTS	34
GROVE CITY MEDICAL CENTER	34
GROVE CITY VOLUNTEER FIRE DEPARTMENT	34
HELPING HANDS	35
HEMPFIELD TOWNSHIP VOLUNTEER FIRE DEPARTMENT	35
HERMITAGE VOLUNTEER FIRE DEPARTMENT	35
IMMACULATE HEART CHURCH – SHARING SHED	35
JAMESTOWN FOOD PANTRY	35
JB Taxi	35
JEFFERSON TOWNSHIP VOLUNTEER FIRE DEPARTMENT	35

KEYSTONE BLIND ASSOCIATION	36
KEYSTONE CHARTER SCHOOL	36
LAKEVIEW AREA PUBLIC LIBRARY	36
LALECHE LEAGUE	36
LAUREL TECHNICAL INSTITUTE	36
LITERACY COUNCIL OF MERCER COUNTY	36
LIVING ROOM LEARNING (GREENVILLE LITERACY COUNCIL)	36
MEALS ON WHEELS	36
MERCER AREA LIBRARY	37
MERCER COUNTY BEHAVIORAL HEALTH COMMISSION (BHC)	37
MERCER COUNTY BOARD OF ASSISTANCE (DPW)	37
MERCER COUNTY CAREER CENTER	37
MERCER COUNTY CAREER CENTER PRESCHOOL	37
MERCER COUNTY CAREER LINK	37
MERCER COUNTY CASA	38
MERCER COUNTY CHILDREN AND YOUTH SERVICES	38
MERCER COUNTY COMMUNITY TRANSIT	38
MERCER COUNTY COOPERATIVE EXTENSION	38
MERCER COUNTY FAMILY CENTERS	38
MERCER COUNTY HABITAT FOR HUMANITY	38
MERCER COUNTY HOUSING AUTHORITY	39
MERCER COUNTY JUVENILE ADVISORY BOARD	39
MERCER COUNTY STATE HEALTH CENTER	39
MERCER EAST END VOLUNTEER FIRE DEPARTMENT	39
MIDWESTERN INTERMEDIATE UNIT IV	39
MINORITY HEALTH ADVOCACY	39
NEED-A-PHYSICIAN	39
NEIGHBORHOOD-BASED FAMILY INTERVENTION CENTER	39
NEIGHBORHOOD NETWORK EDUCATION TEAM	40
NORTH SHARON VOLUNTEER FIRE COMPANY	40
NORTHWEST LEGAL SERVICES	40
OFFICE OF VOCATIONAL REHABILITATION	40
PAOLETTA PSYCHOLOGICAL SERVICES	40
PARENT NETWORK	40
PARENTS OF CHILDREN WITH SPECIAL NEEDS	40
PATAGONIA VOLUNTEER FIRE DEPARTMENT	41
PENN POWER C.A.R.E.S. PROGRAM	41
PENN STATE – SHENANGO CAMPUS	41
PENNSYLVANIA CHILDREN’S HEALTH INSURANCE PROGRAM (CHIP)	41
PENNSYLVANIA DEPARTMENT OF HEALTH	41
PENNSYLVANIA EMERGENCY MANAGEMENT AGENCY	41
PENNSYLVANIA LAWYER REFERRAL SERVICE	41
PENNSYLVANIA PUBLIC UTILITY (WATER, GAS, ELECTRIC)	41
PENNSYLVANIA STATE POLICE (MERCER BARRACKS)	41
PEOPLE IN NEED	42
PINE TOWNSHIP ENGINE COMPANY	42
POISON CONTROL CENTER	42
PREGNANCY RESOURCE CENTER	42
PRESCHOOL CONNECTION	42
PRIMARY HEALTH NETWORK	42

PRINCE OF PEACE	43
PROTECTION FROM ABUSE	43
RESPIRE CARE	43
SALVATION ARMY	43
SHARING & CARING FOR PERSONS IN NEED	43
SHARON COMMUNITY HEALTH CENTER	44
SHARON FIRE DEPARTMENT	44
SHARON REGIONAL BEHAVIORAL HEALTH SERVICES	44
SHARON REGIONAL BREAST CARE CENTER	44
SHARON REGIONAL DIAGNOSTIC & IMAGING CENTER	44
SHARON REGIONAL HEALTH SYSTEM	44
SHARPSVILLE VOLUNTEER FIRE DEPARTMENT	44
SHENANGO VALLEY COMMUNITY LIBRARY	44
SHENANGO VALLEY SHUTTLE BUS	45
SHENANGO VALLEY URBAN LEAGUE	45
SOCIAL SECURITY ADMINISTRATION	45
SOUTH PYMATUNING TOWNSHIP VOL. FIRE DEPARTMENT, STA. #78	45
SPECIAL KIDS NETWORK	45
SPRINGFIELD TOWNSHIP VOLUNTEER FIRE DEPARTMENT	45
ST. JOHN'S EPISCOPAL CHURCH	45
STD CLINIC OF MERCER COUNTY	45
STEY NEVANT LIBRARY	46
STONEBORO VOLUNTEER FIRE COMPANY	46
THE WOMEN'S CENTER - SHARON REGIONAL HEALTH SYSTEM	46
THIEL COLLEGE	46
TRANSFER VOLUNTEER FIRE DEPARTMENT	46
UNITED WAY OF MERCER COUNTY	46
UPMC Horizon Hospitals	46
UPMC Womancare Center	46
VICTIM / WITNESS PROGRAM	46
Vocational & Psychological Services	47
WEST CENTRAL CENTER FOR THE DEAF	47
WEST MIDDLESEX VOLUNTEER FIRE DEPARTMENT	47
WEST SALEM VOLUNTEER FIRE DEPARTMENT	47
WHEATLAND VOLUNTEER FIRE DEPARTMENT	47
WIC (SEE SHENANGO VALLEY URBAN LEAGUE)	45



RESOURCE INDEX

CHILD CARE

CHILD CARE INFORMATION SERVICES (C.C.I.S.)	30
MERCER COUNTY CAREER CENTER PRESCHOOL	37
RESPITE CARE	43

CHILD ISSUES

BUREAU OF PA CHILD SUPPORT ENFORCEMENT	30
CHILDREN'S AID SOCIETY OF MERCER COUNTY	30
MERCER COUNTY CASA	38
MERCER COUNTY CHILDREN AND YOUTH SERVICES	38
MERCER COUNTY FAMILY CENTERS	38
MERCER COUNTY JUVENILE ADVISORY BOARD	39

CLOTHING

GOOD SHEPHERD CENTER, INC.	33
HELPING HANDS	35
PREGNANCY RESOURCE CENTER	42
PRINCE OF PEACE	43
SALVATION ARMY – THRIFT STORES	43

CONSUMER AFFAIRS

BETTER BUSINESS BUREAU OF WESTERN PENNSYLVANIA	30
COMMUNITY ACTION PARTNERSHIP OF MERCER COUNTY	31
GREENVILLE AREA LEISURE SERVICES ASSOCIATION (GALSA)	33

COUNSELING SERVICES

CATHOLIC CHARITIES COUNSELING & ADOPTION AGENCY	30
COMMUNITY COUNSELING CENTER OF MERCER COUNTY	31
COMPREHENSIVE CHILDREN & FAMILY SERVICES	31
E.R.A.S.E. (ANTI-DRUG COALITION)	32

COUNSELING SERVICES Continued.....

MERCER COUNTY BEHAVIORAL HEALTH COMMISSION (BHC)_____ 37
PAOLETTA PSYCHOLOGICAL SERVICES_____ 40
SHARON REGIONAL BEHAVIORAL HEALTH SERVICES_____ 44
SHENANGO VALLEY URBAN LEAGUE_____ 45
Vocational & Psychological Services_____ 47

DISABILITIES

ASSOCIATION FOR CHILDREN WITH LEARNING DISABILITIES_____ 29
CHILDREN’S CENTER OF MERCER COUNTY_____ 30
FARRELL AREA SCHOOL DISTRICT’S EARLY INTERVENTION PROGRAM_____ 32
KEYSTONE BLIND ASSOCIATION_____ 36
MERCER COUNTY BEHAVIORAL HEALTH COMMISSION (BHC)_____ 37
MIDWESTERN INTERMEDIATE UNIT IV_____ 39
OFFICE OF VOCATIONAL REHABILITATION_____ 40
PARENT NETWORK_____ 40
PRESCHOOL CONNECTION_____ 42
SHARING AND CARING FOR PERSONS IN NEED OF MERCER COUNTY, INC._____ 43
SPECIAL KIDS NETWORK_____ 45
WEST CENTRAL CENTER FOR THE DEAF_____ 47

DOMESTIC VIOLENCE

AW/ARE, INC._____ 29
PROTECTION FROM ABUSE_____ 43

EDUCATION/TRAINING

GROVE CITY COLLEGE_____ 34
KEYSTONE CHARTER SCHOOL_____ 36
LAUREL TECHNICAL INSTITUTE _____ 36
MERCER COUNTY CAREER CENTER_____ 37
MERCER COUNTY COOPERATIVE EXTENSION_____ 38
NEIGHBORHOOD NETWORK EDUCATION TEAM_____ 40

EDUCATION/TRAINING Continued...

PENN STATE – SHENANGO CAMPUS _____ 41
THIEL COLLEGE _____ 46

EMERGENCY FOOD/ASSISTANCE

AMERICAN RED CROSS _____ 29
CITY RESCUE MISSION _____ 31
GOOD SHEPHERD CENTER, INC. _____ 33
HELPING HANDS _____ 35
MERCER COUNTY BOARD OF ASSISTANCE (DPW) _____ 37
SALVATION ARMY _____ 43
SHENANGO VALLEY URBAN LEAGUE _____ 45

EMPLOYMENT

MERCER COUNTY CAREER CENTER _____ 37

ENERGY ASSISTANCE

COMMUNITY ACTION PARTNERSHIP OF MERCER COUNTY _____ 31
MERCER COUNTY BOARD OF ASSISTANCE (DPW) _____ 37
PENN POWER C.A.R.E.S. PROGRAM _____ 41
PENNSYLVANIA PUBLIC UTILITY (WATER, GAS, ELECTRIC) _____ 41
PRINCE OF PEACE _____ 43
SALVATION ARMY _____ 43

EXPECTANT MOTHERS, INFANT & TODDLER SUPPORT

CATHOLIC CHARITIES - PROJECT WIN (WOMEN IN NEED) _____ 30
PEOPLE IN NEED _____ 42
PREGNANCY RESOURCE CENTER _____ 42
SHENANGO VALLEY URBAN LEAGUE _____ 45

FINANCIAL/LEGAL

COMMUNITY ACTION PARTNERSHIP OF MERCER COUNTY _____ 31
CONSUMER CREDIT COUNSELING SERVICES OF MERCER COUNTY _____ 31

FINANCIAL/LEGAL Continued...

DOMESTIC RELATIONS _____	32
MERCER COUNTY BOARD OF ASSISTANCE (DPW) _____	37
NORTHWEST LEGAL SERVICES _____	40
PENNSYLVANIA LAWYER REFERRAL SERVICE _____	41
PROTECTION FROM ABUSE _____	43
SOCIAL SECURITY ADMINISTRATION _____	45
VICTIM / WITNESS PROGRAM _____	46

FIRE/RESCUE DEPARTMENTS

CLARK VOLUNTEER FIRE DEPARTMENT _____	31
FARRELL FIRE DEPARTMENT _____	33
FREDONIA VOLUNTEER FIRE DEPARTMENT _____	33
GREENVILLE FIRE DEPARTMENT _____	33
GROVE CITY VOLUNTEER FIRE DEPARTMENT _____	34
HEMPFIELD TOWNSHIP VOLUNTEER FIRE DEPARTMENT _____	35
HERMITAGE VOLUNTEER FIRE DEPARTMENT _____	35
JEFFERSON TOWNSHIP VOLUNTEER FIRE DEPARTMENT _____	35
MERCER EAST END VOLUNTEER FIRE DEPARTMENT _____	39
NORTH SHARON VOLUNTEER FIRE COMPANY _____	40
PATAGONIA VOLUNTEER FIRE DEPARTMENT _____	41
PENNSYLVANIA EMERGENCY MANAGEMENT AGENCY _____	41
PENNSYLVANIA STATE POLICE (MERCER BARRACKS) _____	41
PINE TOWNSHIP ENGINE COMPANY _____	42
SHARON FIRE DEPARTMENT _____	44
SHARPSVILLE VOLUNTEER FIRE DEPARTMENT _____	44
SOUTH PYMATUNING TOWNSHIP VOL. FIRE DEPT., STATION #78 _____	45
SPRINGFIELD TOWNSHIP VOLUNTEER FIRE DEPARTMENT _____	45
STONEBORO VOLUNTEER FIRE COMPANY _____	46
TRANSFER VOLUNTEER FIRE DEPARTMENT _____	46
WEST MIDDLESEX VOLUNTEER FIRE DEPARTMENT _____	47
WEST SALEM VOLUNTEER FIRE DEPARTMENT _____	47
WHEATLAND VOLUNTEER FIRE DEPARTMENT _____	47

FOOD

ANGEL FOOD MINISTRIES	29
CITY RESCUE MISSION	31
GOOD SHEPHERD CENTER, INC.	33
GRACE COMMUNITY FOOD PANTRY	33
HELPING HANDS	35
IMMACULATE HEART CHURCH (SHARING SHED)	35
JAMESTOWN FOOD PANTRY	35
MEALS ON WHEELS	36
PRINCE OF PEACE CENTER	43
SALVATION ARMY	43
ST. JOHN'S EPISCOPAL CHURCH	45

HEALTH CARE

CHILDREN'S HOSPITAL OF PITTSBURGH	31
FAMILY PLANNING SERVICES OF MERCER COUNTY	32
GROVE CITY MEDICAL CENTER	34
KEYSTONE BLIND ASSOCIATION	36
MERCER COUNTY STATE HEALTH CENTER	39
MINORITY HEALTH ADVOCACY	39
PENNSYLVANIA DEPARTMENT OF HEALTH	41
POISON CONTROL CENTER	42
PRIMARY HEALTH NETWORK	42
SHARON COMMUNITY HEALTH CENTER	44
SHARON REGIONAL BEHAVIORAL HEALTH SERVICES	44
SHARON REGIONAL BREAST CARE CENTER	44
SHARON REGIONAL DIAGNOSTIC & IMAGING CENTER	44
SHARON REGIONAL HEALTH SYSTEM	44
SHENANGO VALLEY URBAN LEAGUE	45
STD CLINIC OF MERCER COUNTY	45
THE WOMEN'S CENTER (SHARON REGIONAL HEALTH SYSTEMS)	46
UPMC Horizon Hospital	46
UPMC WOMANCARE CENTER	46

HEALTH INSURANCE

BLUE CROSS/BLEU SHIELD SPECIAL CARE_____	30
PA CHILDREN’S HEALTH INSURANCE PROGRAM (CHIP)_____	41

HOUSING

ARK HOUSE (SOUTHWEST GARDENS)_____	29
COMMUNITY ACTION PARTNERSHIP OF MERCER COUNTY_____	31
GERALDINE APARTMENTS_____	33
MERCER COUNTY HABITAT FOR HUMANITY_____	38
MERCER COUNTY HOUSING AUTHORITY_____	39
PRINCE OF PEACE_____	43

INFORMATION/REFERRAL

NEED-A-PHYSICIAN_____	39
UNITED WAY OF MERCER COUNTY_____	46

LIBRARIES

GREENVILLE PUBLIC LIBRARY_____	34
GROVE CITY COMMUNITY LIBRARY_____	34
LAKEVIEW AREA PUBLIC LIBRARY_____	36
MERCER AREA LIBRARY_____	37
SHENANGO VALLEY COMMUNITY LIBRARY_____	44
STEY NEVANT LIBRARY_____	46

LITERACY PROGRAMS/ABE/GED

GREENVILLE LITERACY COUNCIL_____	34
GROVE CITY EDUCATION CENTER FOR ADULTS_____	34
HELPING HANDS_____	35
LITERACY COUNCIL OF MERCER COUNTY_____	36
LIVING ROOM LEARNING (GREENVILLE LITERACY COUNCIL)_____	36
MERCER COUNTY CAREER CENTER_____	37

PARENTING CLASSES AND SUPPORTS

CATHOLIC CHARITIES COUNSELING & ADOPTION AGENCY _____ 30
CHILDREN’S AID SOCIETY OF MERCER COUNTY _____ 30
DIVERSIFIED FAMILY SERVICES _____ 32
LALECHE LEAGUE _____ 36
NEIGHBORHOOD-BASED FAMILY INTERVENTION CENTER _____ 39
PARENTS OF CHILDREN WITH SPECIAL NEEDS _____ 40
PRINCE OF PEACE _____ 43

TRANSPORTATION

DEPENDABLE TAXI (PHIL’S) _____ 32
JB TAXI _____ 35
MERCER COUNTY COMMUNITY TRANSIT _____ 38
SHENANGO VALLEY SHUTTLE BUS _____ 45

WEATHERIZATION

COMMUNITY ACTION PARTNERSHIP OF MERCER COUNTY _____ 31

Why am I my child’s first teacher?

Head Start firmly believes that parents are the first teachers of their children.

We want you to be part of their learning, that is why we ask you to volunteer regularly in the classroom.

It is also why we come to your home to talk about your child.

It is why we want you to ask questions and give us your ideas.

We hope you take part in our programs for parents.



RESOURCE DIRECTORY

AMERICAN RED CROSS

724-962-9180

517 W. Main Street, Sharpsville, PA 16150

Emergency only (nights, holidays or weekends): 724-981-1293

Disaster services

ANGEL FOOD MINISTRIES

1-877-FOOD-MINISTRIES

www.angelfoodministries.com

Greenville: Bethel Life Worship Center

724-589-5433

www.blwc.org

Hermitage: Miracle Valley Church

724-962-5400

www.miraclevalleychurch.com

Jackson Center: Vincent UMC

724-662-5522

Sandy Lake: Sandy Lake Presb. Church

724-376-2630

Sharon: Shenango UMC

724-983-0200

www.sharonfirstumc.com

No income guidelines; food orders placed in advance (call for monthly hours)

Angel Food Ministries is a non-profit, non-denominational organization dedicated to providing grocery relief and financial support to communities throughout the United States.

ARK HOUSE (Southwest Gardens)

724-342-2751

418 Fruit Ave., Farrell, PA 16121

ASSOCIATION FOR CHILDREN WITH LEARNING DISABILITIES

724-346-5887 (or) 724-962-5589 M-TH 3:00-7:00

28 N. Pine Ave., Sharon, PA 16146

e-mail: amilliard@yahoo.com

AW/AWARE, INC. - Mercer County's Center Against Domestic & Sexual Violence

24-hr toll free hotline: 1-888-981-1457, Local/TTY hotline: 724-981-1457

Business: 724-342-4934 (M-F 8:30-4:30)

Legal Advocacy: 724-662-3800, ext. 2542

P.O. Box 612, Mercer, PA 16137

e-mail: awareinc@verizon.net

24-hr. hotline, 24-hr. accessible shelter for female victims of domestic violence and their children, individual & group supportive counseling, advocacy with county systems, medical & legal advocacy and accompaniment, and community and school prevention education. All services are free and confidential

BETTER BUSINESS BUREAU OF WESTERN PENNSYLVANIA

412-456-2700

810 Smithfield St., Pittsburgh, PA

BLUE CROSS/BLUE SHIELD SPECIAL CARE (Adults)

800-544-6679 or 800-GO-BASIC

Health insurance available at reduced rates for eligible adults

BUREAU OF PA CHILD SUPPORT ENFORCEMENT

800-932-0211

CATHOLIC CHARITIES COUNSELING & ADOPTION AGENCY

724-346-4142 M-F 8:30-5:00

995 Linden Street., Sharon, PA 16146

e-mail: sharoncccas@verizon.net

Emergency pregnancy services, foster home care, adoption, free pregnancy testing, marriage & family counseling
Free counseling in the areas of baby blues, parenting information, anxiety, and relationship problems for biological mother and/or father until baby reaches age one (1).
Project W.I.N. (Emergency baby supplies for low-income mothers - diapers, wipes, clothes, blankets, etc.)

CHILD CARE INFORMATION SERVICES (C.C.I.S.)

724-346-6171 M-F 8:00-5:00

825 Sharon-New Castle Road, Farrell, PA 16121

Subsidized funding for daycare services & information on various locations in Mercer County where daycare is available

CHILDREN'S AID SOCIETY OF MERCER COUNTY

724-662-4730 M-F 8:00-5:00 by APPOINTMENT

350 W. Market St., P.O. Box 167, Mercer, PA

e-mail: casmc@zoominternet.net

Website: www.casmc.org

Adoption, Family Life education programs, nurturing program, family-based mental health services, residential program and emergency shelter, day care (6 wks. to 12 yrs.), intensive in-home intervention services, information and referral

CHILDREN'S CENTER OF MERCER COUNTY

724-342-3738 M-F 7:00-6:00

900 N. Hermitage Rd., Hermitage, PA 16148

e-mail: ccmc@neohio.twcbc.com

Website: www.ccmcweb.com

Specialized needs day care program providing early intervention services to children birth to 5 years of age, including speech and language evaluations

CHILDREN'S HOSPITAL OF PITTSBURGH

412-692-5325

3705 Fifth Ave., Pittsburgh, PA

Casework and counseling, medical and dental care, occupational, physical and speech therapy, psychiatric services, psychological testing and evaluations for children 0-18 years of age

CITY RESCUE MISSION

724-652-4321

319 S. Croton Ave., New Castle, PA 16103

Meals, lodging, clothing, furniture, emergency food, home visitation, Inter-city youth activities and emergency housing for fire victims

Food Bank hours: Monday-Friday, 8:30–11:00 AM and 1:00–3:45 PM

Call for appointment; bring ID and proof of income

CLARK VOLUNTEER FIRE DEPARTMENT

724-962-1330

P. O. Box 61, Clark, PA 16113

COMMUNITY ACTION PARTNERSHIP OF MERCER COUNTY

724-342-6222 or 1-888-508-5216

75 S. Dock St., Sharon, PA 16146

Weatherization, housing and housing counseling, USDA Rural Housing Loan Programs, Utility Assistance program and financial counseling for home buyers.

COMMUNITY COUNSELING CENTER OF MERCER COUNTY

724-981-7141 (or) 1-866-853-7758 afternoon, some evening hours, limited sat.

2201 E. State St., Hermitage, PA 16148

77 N. Main Street, Greenville, PA 16125

15 Woodland Center Drive, Grove City, PA 16127

Website: www.cccmer.org

Individual, group and family counseling, mental health treatment, consultation and assessment

COMPREHENSIVE CHILDREN & FAMILY SERVICES

724-981-9900 (or) 1-800-630-2237 M-F 9:00-4:00 & TH 9:00-7:00

194 E. State Street, Sharon, PA 16146

e-mail: comprehensivechildrenandfamily@yahoo.com

Website: wraparound.com (or) ellwoodcity.org/comp.htm

CONSUMER CREDIT COUNSELING SERVICES OF MERCER COUNTY

724-342-6302

734 Stambaugh Avenue, Sharon, PA 16146

Free budget counseling, debt management and education

DEPENDABLE TAXI (Phil's)

724-981-7445

DIVERSIFIED FAMILY SERVICES

724-346-2123 M-F 9:00-5:00

5454 E. State Street, P.O. Box 102., Hermitage, PA 16148

e-mail: ntusinac@diversifiedfamily.org

Website: www.diversifiedfamily.org

Active parenting classes that address the issues involved with parenting

DOMESTIC RELATIONS

724-662-2404, 724-662-2405, 724-962-5711

Mercer County Courthouse, 121 N. Pitt St., Mercer, PA 16137

Provides for payment of cash support and/or medical expenses by independent spouse to dependent spouse and/or minor children. Based on number of persons to be supported and the income and expenses of each party per statewide guidelines. Possible 4-8 week waits between filing and hearing (www.childsupport.state.pa.us)
\$5.00 filing fee for new action

E.R.A.S.E. (Anti-drug coalition)

724-981-3856

211 Federal St., P.O. Box 301, Farrell, PA 16121

Counseling for drug and alcohol, tool lending library, support group and youth activities

FAMILY PLANNING SERVICES OF MERCER COUNTY

Sharon - 724-981-6250 M-TH 9:00-5:00 & Fri 9:00-4:00

87 Stambaugh Ave., Suite 1, Sharon, PA 16146

Greenville - 724-588-2272 M-F 9:00-5:00

74 Shenango St., Greenville, PA 16125

e-mail: FP-greenville@verizon.net

Grove City - 724-458-8505 (Hillcrest Medical Center)

Individual counseling and medical assistance; community education regarding family planning and related health and social services

FARRELL AREA SCHOOL DISTRICT'S EARLY INTERVENTION PROGRAM

724-509-1358 M-F 8:00-4:00

1901 Memorial Dr., Farrell, PA 16121

e-mail: pperkins@farrellareaschools.com

Classes for preschool children with developmental delays or disabilities residing in Farrell & Wheatland

Screenings, diagnostic services, information and referral services, and parent education

FARRELL FIRE DEPARTMENT

724-983-2707

500 Roemer Blvd., Farrell, PA 16121

FREDONIA VOLUNTEER FIRE DEPARTMENT

724-475-2646

46 First St., Fredonia, PA 16124

GALSA (Greenville Area Leisure Services Association)

M-TH 9:00-9:00, FRI 9:00-8:00, SAT 10:00-6:00

45 Alan Avenue, P.O. Box 244, Greenville, PA 16125

e-mail: galsa@galsa.org

Website: www.galsa.org

Provider of recreational programming, activities and special events for the Greenville community and its service area while maintaining and operating the Borough's park system.

GERALDINE APARTMENTS

724-475-4457

Fredonia, PA 16124

Low income housing (30% of income)

GOOD SHEPHERD CENTER, INC.

724-588-2210 M-F 8:30-4:30

144-46 Main St., Greenville, PA 16125

e-mail: tgscinc@yahoo.com

Food Pantry, emergency/referral services, growth opportunity seminars, the clothes closet, free clinic, volunteers; serving the Greenville area

Food Pantry hours: Monday, Thursday & Friday, 8:00 AM–12:00 PM; Tuesday & Wednesday, 8:00 AM–3:00 PM

GRACE COMMUNITY FOOD PANTRY

724-748-5972 M 1:30-4:00 & 1st M 5:30-7:00

P.O. Box 68., Grove City, PA 16127

Must reside in the Grove City School District and provide proof of income, Social Security numbers, birthdates and medical card (if applicable) for all family members

GREENVILLE FIRE DEPARTMENT

724-588-3111

111 East Ave., Greenville, PA 16125

GREENVILLE LITERACY COUNCIL

724-588-6141 or 724-589-5979
222 Main St., Greenville, PA 16125

Locations in Greenville, Jamestown and Reynolds

GREENVILLE PUBLIC LIBRARY

724-588-5490 M-TH 10:00-8:00 & F-SAT 10:00-4:00
330 Main St., Greenville, PA 16125
e-mail: gpubliclibrary@neo.rr.com
Website: www.lawrencecountylibrary.org/mercer/greenville/main.htm

GROVE CITY COLLEGE

724-458-2000
100 Campus Dr., Grove City PA 16127

GROVE CITY COMMUNITY LIBRARY

724-458-7320 M-T-W 10:00-5:00, TH-FR 10:00-8:00 & SAT 10:00-5:00
Fax # 724-458-7332
125 W. Main St., Grove City, PA 16127
e-mail: grovepl@zoominternet.net
Website: www.grovecitypalibrary.org

GROVE CITY EDUCATION CENTER FOR ADULTS

724-458-7270
Grove City Library, 125 W. Main St., Grove City, PA 16127

GROVE CITY MEDICAL CENTER

724-458-5442
631 N. Broad Street, Grove City, PA 16127
e-mail: dhenley@gcmcpa.org
Website: www.gcmcpa.org

GROVE CITY VOLUNTEER FIRE DEPARTMENT

724-458-5311
146 N. Broad St., Grove City, PA 16127

HELPING HANDS

724-376-3231

51 Lake St., Stoneboro, PA 16153

Food Pantry/Bread Shelf, information and referral, Thrift Store, rental/utility assistance, financial guidance, Bread Shelf (open to the public) and adult GED classes

Satellite for Salvation Army Services: Jackson Center, Hadley, Stoneboro, Clarks Mills and Fredonia areas

Food Pantry hours: Monday, Tuesday, Thursday & Friday – 9:00 AM-4:00 PM (1st time users need to call for appointment)

HEMPFIELD TOWNSHIP VOLUNTEER FIRE DEPARTMENT

724-588-6001

20 6th St., Greenville, PA 16125

HERMITAGE VOLUNTEER FIRE DEPARTMENT

724-342-0669

2511 Highland Rd., Hermitage, PA 16148

IMMACULATE HEART OF MARY CHURCH (Sharing Shed)

724-662-2999 2nd & 4th Sat. 10:00-12:00 & emergency as needed

100 Penn Ave., Mercer, PA 16137

JAMESTOWN FOOD PANTRY

724-927-6069

Denver St., Jamestown, PA 16134

Serving residents living in zip code areas: 16110, 16111, 16131, and 16134

Open 1st & 3rd Friday of every month from 9:00–11:00 AM

Must show proof of residency and provide social security numbers for each household member

JB TAXI

724-981-6666

JEFFERSON TOWNSHIP VOLUNTEER FIRE DEPARTMENT

724-662-4777

1648 Bend Rd., Mercer, PA 16137

KEYSTONE BLIND ASSOCIATION

724-347-5501 M-F 8:30-4:30
1230 Stambaugh Ave., Sharon, PA 16146
e-mail: kba@keystoneblind.org
Website: www.keystoneblind.org

Offers blind and visually handicapped Mercer County residents services designed to maintain and improve their quality of life and to actively work for the prevention of blindness

KEYSTONE EDUCATION CHARTER SCHOOL

724-588-2511 M-F 7:30-3:00
425 s. Good Hope Road, Greenville, PA 16125

LAKEVIEW AREA PUBLIC LIBRARY

724-376-4217 or 724-376-7246
3271 S. Main St., Sandy Lake, PA 16145

LA LECHE LEAGUE

724-983-5518 or 1-800-346-7997

Breastfeeding support

LAUREL TECHNICAL INSTITUTE

724-983-0700
335 Boyd Dr., Sharon, PA 16146

LITERACY COUNCIL OF MERCER COUNTY

724-981-5494 or 724-588-6141 5 days week at 4 different sites
222 Main Street, Greenville, PA 16125
e-mail: info@the-literacy-council.org
Website: www.the-literacy-council.org

LIVING ROOM LEARNING (Greenville Literacy Council)

724-588-6141
222 Main St., Greenville, PA 16125

Adult education program offered in the home for 12 weeks

MEALS ON WHEELS

724-342-2042 8:45-12:00
396 Buhl Blvd., Sharon, PA 16146

Provides nutritious meals for people who are unable to shop and/or cook for themselves because of emotional or physical problem
Must reside within a 10 mile radius of the Sharon area. **Fee for service**

MERCER AREA LIBRARY

724-662-4233 M & FR 9:30-5:00, T-W-TH 9:30-8:00, SAT 8:00-3:00 (summer 8-12)
Fax # 724-662-8893
143 N. Pitt St., Mercer, PA 16137
e-mail: mercerarealib@htol.net
Website: www.mercerarealibrary.net

MERCER COUNTY BEHAVIORIAL HEALTH COMMISSION (BHC)

724-662-1550 M-F 8:30-4:30
8406 Sharon-Mercer Rd, Mercer, PA 16137
e-mail: melissa.hollen@mercercountybhc.org

Provides early intervention for children birth to three years of age with developmental delays

MENTAL HEALTH SERVICES: Central Intake – 724-662-2230
After hours crisis phone # 724-981-4555

MERCER COUNTY BOARD OF ASSISTANCE (DPW)

724-983-5000 M-F 7:30-5:00
2236 Highland Rd., Hermitage, PA 16148
e-mail: c-mercer@state.pa.us

Financial assistance (S.S.I., Federal Food Stamps, Medical Assistance, etc.) for Mercer County residents, Emergency Energy Assistance

MERCER COUNTY CAREER CENTER

724-662-3000
776 Greenville Rd., P.O. Box 152, Mercer, PA 16137

MERCER COUNTY CAREER LINK (Formerly J.T.P.A)

724-347-9257 M-T-TH-F 8:00-4:30 & W 10:00-4:30
217 W. State St., Sharon, PA 16146
e-mail: VDARCANG@state.pa.us
Website: www.pacareerlink.state.pa.us

Employment or educational training opportunities for low-income or dislocated individuals
Other services include veteran services, vocational rehabilitation, employment assistance, and job training

MERCER COUNTY CAREER CENTER PRESCHOOL (Personal Care Classes)

724-662-3000 T-W-TH 8:30-10:30 & 12:30-2:30
776 Greenville Road, Mercer, PA 16137
e-mail: cmoore@mccc.tec.pa.us

MERCER COUNTY CASA

724-342-2841

Community volunteers provided to abused and neglected children within the court system

MERCER COUNTY CHILDREN AND YOUTH SERVICES (CYS)

724-662-2703 M-F 8:30-4:30

(Emergency Number – 724-662-3112)

8425 Sharon-Mercer Rd., Mercer, PA 16137

e-mail: mdaniels@mcc.co.mercer.pa.us

Adoption, counseling/intervention action, foster family services, general child caring facilities, group home services, homemaker services, information and referrals, planning and shelter care services

MERCER COUNTY COMMUNITY TRANSIT

724-981-6222 or 800-222-8797

2495 Highland Rd., Hermitage, PA 16148

Transportation to health cares appointments for public assistance and medical cardholders, senior citizen; fee for others

MERCER COUNTY COOPERATIVE EXTENSION

724-662-3141 (or) 724-342-4036 M-F 8:30-4:30

P.O. Box 530, 463 N. Perry Highway,, Mercer, PA 16137

e-mail: jld28@psu.edu (or) vam@psu.edu

Website: <http://mercerc.extension.psu.edu>

Provides educational programs in nutrition, parenting, child development, family relations, money-management, housing, energy and agriculture

MERCER COUNTY FAMILY CENTERS

Farrell/Wheatland – 724-509-1351

panthony@farrellareaschools.com

Greenville – 724-588-8570

svalimont@greenville.k12.pa.us

Sharon – 724-983-1118

alan_nathan@sharon.k12.pa.us

Advocate for families, parent education, information and referral, Toy Lending Library and group meetings

Sharon Family Center – has a Children’s Clothing Closet for Sharon residents or anyone in need (emergency basis).

MERCER COUNTY HABITAT FOR HUMANITY

724-347-3587

129 Franklin Street, Sharon, PA 16146

MERCER COUNTY HOUSING AUTHORITY

724-342-4000 M-W-TH-F 8:30-4:30 & TUES 10:00-4:30
80 Jefferson Avenue, Sharon, PA 16146
e-mail: mchaze@earthlink.net

MERCER COUNTY JUVENILE ADVISORY COUNCIL, INC

M-F 8:30-4:30
30 Snyder Road, P.O. Box 1084, Hermitage, PA 16148
e-mail: mcjac@mcjac.org
Website: www.mcjac.org

MERCER COUNTY STATE HEALTH CENTER

724-662-4000 M-F 8:00-4:30
25 McQuiston Drive, Jackson Center, PA 16133

MERCER EAST END VOLUNTEER FIRE DEPARTMENT

724-662-3290
P. O. Box 188, Mercer, PA 16137

MIDWESTERN INTERMEDIATE UNIT IV

724-458-6700 or 800-942-8035
453 Maple St., Grove City, PA 16127-2399

Classes for preschool children ages 4 & 5, diagnostic services, information and referral services, physical therapy, psychological testing and evaluation for Mercer County residents

MINORITY HEALTH ADVOCACY

724-981-3856
211 Federal St., Farrell, PA 16121

NEED-A-PHYSICIAN (Sharon Regional Health System)

724-983-3926
740 E. State St., Sharon, PA 16146

Nurses provide information on specific illnesses or first aid suggestions

NEIGHBORHOOD-BASED FAMILY INTERVENTION CENTER

724-347-0190 7 days week/24 hrs day
912 E. State St., Sharon, PA 16146
e-mail: nbfic@infonline.net
Website: www.casmerc.org

Works with court-order adjudicated/delinquent youth and their families
Male involvement programs

NEIGHBORHOOD NETWORK EDUCATION TEAM

724-646-0404

325 Reynolds West Estates, Greenville, PA 16125

Adult Computer Literacy classes

NORTH SHARON VOLUNTEER FIRE COMPANY

724-346-9037

469 Thornton Ave., Sharon, PA 16146

NORTHWEST LEGAL SERVICES

724-346-6112 or 800-665-6957

1013 Roemer Blvd., Farrell, PA 16121

Legal representative in various civil matters to qualifying individuals

OFFICE OF VOCATIONAL REHABILITATION

724-347-9257 X 222

217 W. State St., Sharon, PA 16146

Provides vocational rehabilitation services to eligible citizens in order to maintain or gain employment. Possible services include initial evaluation of eligibility, vocational guidance counseling, possible job training, physical/mental restoration and job placement services

PAOLETTA PSYCHOLOGICAL SERVICES

724-662-7202 M 8:00-5:00, T-W-TH 8:00-8:00, FRI 8:00-6:00

456 N. Pitt Street, Mercer, PA 16137

e-mail: dawnh@svol.net

Website: www.paoletta.org

PARENT NETWORK INC.

724-347-1002 (or) 724-347-6704 M-F 9:00-5:00

100 W. Ridge Avenue, Sharpsville, PA 16150

e-mail: pninc@hotmail.com

PARENTS OF CHILDREN WITH SPECIAL NEEDS (Sharon Regional Health Information Center)

724-983-5518 or 800-346-7997

740 East State Street, Sharon, PA 16146

Support group for parents of children with special needs, including developmental delays, learning disabilities, ADD/ADHS, and physical disabilities. Parents meet to share common concerns and solutions related to parenting children with special needs. Provides education, informal discussions on pertinent topics such as coping skills, family relationships, self-esteem for children, school placement, and dealing with professionals. Meets the 2nd and 4th Wednesday each month at 12:30 PM

PATAGONIA VOLUNTEER FIRE DEPARTMENT

724-342-0776

119 Superior St., Hermitage, PA 16148

PENN POWER C.A.R.E.S. PROGRAM

800-720-3600

PENN STATE-SHENANGO CAMPUS

724-983-2800

147 Shenango Ave., Sharon, PA 16146

PENNSYLVANIA CHILDREN'S HEALTH INSURANCE PROGRAM (C.H.I.P.)

800-986-KIDS (5437)

Provides free or low cost health insurance to uninsured children whose families earn too much to qualify for medical assistance, but not enough to purchase health insurance

PENNSYLVANIA DEPARTMENT OF HEALTH

724-662-4000

25 McQuiston Dr., Jackson Center, PA 16133

Provides Well Baby Clinics and AIDS Testing

PENNSYLVANIA EMERGENCY MANAGEMENT AGENCY

717-783-5061

Office of Fire Safety Services, 2605 Interstate Dr., Harrisburg, PA 17110

PENNSYLVANIA LAWYER REFERRAL SERVICE

800-692-7375

PENNSYLVANIA PUBLIC UTILITY (Water, Gas, Electric)

800-692-7380

PENNSYLVANIA STATE POLICE (Mercer Barracks)

724-662-6162

Free car seat inspections on the third Wednesday of each month between 12:00 - 4:00 pm. Recommend calling for appointment.

PEOPLE IN NEED

Farrell— 724-346-1024 M & W 9:00-4:00, FRI 9:00-2:00
602 Roemer Blvd., Farrell, PA 16121
Website: www.PINPA.ORG

Sharon—724-981-9900 T & TH 9:00-4:00
194 E. State St., Sharon, PA 16146
Website: www.PINPA.ORG

Provides counseling, support services and baby supplies up to age one

PINE TOWNSHIP ENGINE COMPANY

724-458-0636
P. O. Box 627, Grove City, PA 16127

POISON CONTROL CENTER

800-222-1222

PREGNANCY RESOURCE CENTER

724-658-6329 M-F 1:00-5:00
321 N. Jefferson St., P.O. Box 7734, New Castle, PA 16107

Free pregnancy tests. Clothing and supplies for pregnant women and infants/toddlers up to age two. Earn While You Learn program

PRESCHOOL CONNECTION

800-345-0033

Information and referral for families with concerns about their child's physical or emotional development

PRIMARY HEALTH NETWORK

724-342-3002 M-F 8:30-5:00
100 Shenango St., Sharon, PA 16148
e-mail: spiccirilli@primaryhealth.net
Website: www.primary-health.net

Services include Family Practice, Pediatrics, Dentistry, Podiatry, Internal Medicine, Ear, Nose, Throat and Allergy Care, OB/GYN, Pain Management, Optometry and Hypnotherapy

PRINCE OF PEACE

724-346-5777 M & W 9:00-5:00 / T-TH-F 9:00-4:00

502 Darr Ave., Farrell, PA 16121

e-mail: popc@princeofpeacecenter.org

Website: www.princeofpeacecenter.org

Food Pantry, Soup Kitchen, clothing, emergency assistance, counseling, energy assistance and G.E.D. Others services include: case management for the homeless or transitionally homeless and HOPE Advocacy (intensive case management to build more stable families and homes)

Food Pantry hours: 3rd Wednesday of each month, 9:30 AM-12:30 PM & 4:00-6:00 PM

PROTECTION FROM ABUSE

Prothonotary Office: 724-662-3800

Mercer County Court House: 724-962-5711

Immediate protection from physical abuse or assault from spouse and/or minor children

RESPIRE CARE

724-981-7141

Specialized childcare for children with special emotional needs

SALVATION ARMY

Sharon – 724-347-5537

660 Fisher Hill and Hall Ave., Sharon, PA 16146

Must provide proof of income & Sharon residency (utility bills), Social Security number of all family members, birth certificate for all children under age 12

Food Pantry hours: last Thursday of each month, 9:30-11:30 AM & 6:00 PM

Greenville – 724-588-5190

211 Main Street, Greenville, PA 16125

Must provide proof of income & Reynolds/Greenville residency (utility bills), Social Security number of all family members, birth certificate for all children under age 12

Food Pantry hours: Monday, Tuesday, Thursday & Friday, 1:15-2:30 PM

Grove City – 724-458-9840

717 W. Main Street, Grove City, PA 16127

Crisis Counseling, winter clothing, emergency housing & food, fuel assistance

SHARING AND CARING FOR PERSONS IN NEED OF MERCER COUNTY, INC.

724-981-6738

Helps defray some of the daily expenses for transplant candidates and their families

SHARON COMMUNITY HEALTH CENTER

724-347-2429

89 Elm Ave., Sharon, PA 16146

Provides routine primary care and preventative health services to individuals who receive medical assistance or who are uninsured or underinsured

SHARON FIRE DEPARTMENT

724-983-3213

155 W. Connelly Blvd., Sharon, PA 16146

SHARON REGIONAL BEHAVIORIAL HEALTH SERVICES

724-983-5454 or 1-800-950-9982

2375 Garden Way, Sharon, PA 16146

A full spectrum of mental health and substance abuse services to residents of Mercer County and surrounding areas.

Services include: Adult, child, adolescent and geriatric psychiatric inpatient services, wrap-around services, outpatient mental health and substance abuse counseling, outreach and prevention

SHARON REGIONAL BREAST CARE CENTER

724-983-3931

2435 Garden Way, Hermitage, PA 16148

e-mail: breastcare@srhs-pa.org

SHARON REGIONAL DIAGNOSTIC & IMAGING CENTER

724-983-3931

2435 Garden Way, Hermitage, PA 16148

www.sharonregional.com

SHARON REGIONAL HEALTH SYSTEM

724-983-3911

740 E. State St., Sharon, PA 16146

SHARPSVILLE VOLUNTEER FIRE DEPARTMENT

724-962-7846

214 W. Main St., P. O. Box 24, Sharpsville, PA 16150

SHENANGO VALLEY COMMUNITY LIBRARY

724-981-4360 M-TH 10:00-8:00, FRI & SAT 10:00-5:00

Fax # 724-981-5208

11 N. Sharpsville Ave., Sharon, PA 16146

SHENANGO VALLEY SHUTTLE BUS

724-981-1561

SHENANGO VALLEY URBAN LEAGUE

724-981-6154 (or) 814-676-0099 M-T-TH-F 8:00-4:00, W 11:00-7:00

601 Indiana Ave., Farrell, PA 16121

e-mail: wic@adelphia.net

Education, employment and housing counseling

Emergency rent/mortgage assistance

Community housing services, Immunizations, Sickle Cell Anemia testing for all ages, ERSDT screening, and WIC (a nutritional assistance program for women, infants, and children)

SOCIAL SECURITY ADMINISTRATION

800-772-1213 (or) 724-346-5904 ext. 212 M-F 8:45-3:45

295 N. Kerrwood, Hermitage, PA 16148

Website: www.socialsecurity.gov

SOUTH PYMATUNING TOWNSHIP VOLUNTEER FIRE DEPARTMENT, STATION #78

724-962-9481

3505 Tamarack Dr., P. O. Box 563, Sharpsville, PA 16150

SPECIAL KIDS NETWORK

800-986-4550

Counselors help families locate services for children, regardless of age, such as disability/special education information, assertive technology, recreational resources, etc.

SPRINGFIELD TOWNSHIP VOLUNTEER FIRE DEPARTMENT

724-748-3597

P. O. Box 222, Mercer, PA 16137

ST. JOHN'S EPISCOPAL CHURCH

724-981-8131

226 W. State St., Sharon, PA 16146

Food Pantry hours: 1st & 3rd Thursday, 1:30-4:00 PM

STD CLINIC OF MERCER COUNTY (at Family Planning)

724-981-6250 TUES 5:30-6:30

87 Stambaugh Avenue, Suite 1, Sharon, PA 16146

STEY NEVANT LIBRARY

724-983-2714 M & TH 11:00-7:00, T & W 10:00-6:00, SAT 8:00-12:00
1000 Roemer Blvd., Farrell, PA 16121
e-mail: muggs-snp1@juno.com

STONEBORO VOLUNTEER FIRE COMPANY

724-376-2396
P. O. Box 576, Stoneboro, PA 16153

THE WOMEN'S CENTER (Sharon Regional Health System)

724-983-3944
740 E. State St., Sharon, PA 16146

THIEL COLLEGE

724-589-2000
College Ave., Greenville, PA 16125

TRANSFER VOLUNTEER FIRE DEPARTMENT

724-646-2659
P. O. Box 105, Transfer, PA 16154

UNITED WAY OF MERCER COUNTY

724-981-1884
300 W. State Street, Sharon, PA 16146

UNIVERSITY of PITTSBURGH MEDICAL CENTER (UPMC)

HORIZON HOSPITAL

888-447-1122
Greenville Campus - 724-588-2100
110 N. Main St., Greenville, PA 16125
Shenango Valley Campus - 724-981-3500
2200 Memorial Drive, Farrell, PA 16121

UPMC WOMANCARE CENTER

724-347-7700 or 1-866-347-7700
875 N. Hermitage Rd., Hermitage, PA 16148

VICTIM / WITNESS PROGRAM

724-662-3800 EXT. 2287 M-F 8:30-4:30
209 County Courthouse, Mercer, PA 16137
e-mail: jmooney@mcc.co.mercer.pa.us
Website: www.mercer.co.merlink.org

VOCATIONAL AND PSYCHOLOGICAL SERVICES

724-982-4791

Psychological testing, counseling, and TSS services. Ages 2 to adult.

WEST CENTRAL CENTER FOR THE DEAF

724-342-3323, TTY-724-981-4327

2201 E. State Street, Hermitage, PA 16148

Provides behavior and emotional health care services to children and adolescents (birth-22 year olds) who are deaf or hard-of-hearing or children with parents who are deaf or hard-of-hearing

WEST MIDDLESEX VOLUNTEER FIRE DEPARTMENT

724-528-2615

25 North St., West Middlesex, PA 16159

WEST SALEM VOLUNTEER FIRE DEPARTMENT

724-588-3945

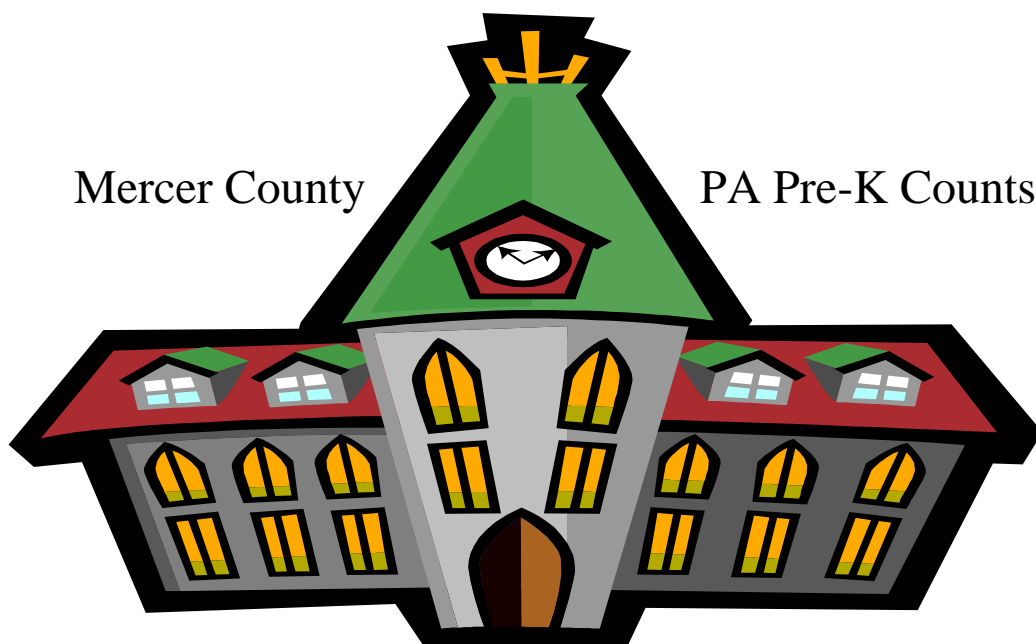
625 Vernon Rd., Greenville, PA 16125

WHEATLAND VOLUNTEER FIRE DEPARTMENT

724-347-5367

P. O. Box 49, Wheatland, PA 16161

911 - Emergency Number for all calls



DENTISTS & DENTAL CLINICS/CENTERS

ALLIED DENTAL GROUP
724-794-2224
234 S. Main Street
Slippery Rock, PA 16057



DR. CARL BELL
724-662-5101
209 S. Pitt St.
Mercer, PA 16137

DR. THOMAS BOST
724-588-3012
126 College Ave.
Greenville, PA 16125

DR. SUSAN CALDERBANK
724-588-1600
43 Clinton St.
Greenville, PA 16125

DR. DENNIS CHARLTON
724-376-7161
3242 South Main St.
Sandy Lake, PA 16145

CHILDREN'S HOSPITAL
DENTAL CLINIC
412-692-5440
Pittsburgh, PA

DR. CHINAWALLA
724-776-9033
Cranberry, PA

DR. DIETZ
724-652-7491
2210 Wilmington Road
New Castle, PA 16101

DR. MARK ELISCO
724-981-1223
3110 Highland Rd.
Hermitage, PA 16148

FARRELL DENTAL CLINIC,
DRS. BEAL, COSGROVE, MORGAN
AND YOUNG
724-981-1721
350 Sharon-New Castle Rd.
Farrell, PA 16121

DR. DUANE GRUBER
724-588-9520
37 Hadley Rd.
Greenville, PA 16125
DR. CHRISTIAN JEFFRIES
724-981-1721
350 Sharon-New Castle Rd.
Farrell, PA 16121

DR. KENNEY
724-652-7491
New Castle, PA

DR. JAMES KOLLAR
724-981-4270
2200 East State St.
Hermitage, PA 16148

DR. THOMAS KOSICK
724-376-7161
3242 South Main St.
Sandy Lake, PA 16145

DR. ANDREW KRANTZ
724-458-4500
1007 West Main St.
Grove City, PA 16127

DR. THOMAS LAH
724-458-9422
1235 S. Center St. Ext.
Grove City, PA 16127

DR. JOHN MANGANELLO
724-588-3012
126 College Ave.
Greenville, PA 16125

DR. ERIC MONG
724-588-8910
206 Main St.
Greenville, PA 16125

NEW CASTLE DENTAL CENTER
724-656-3486
1112 S. Mill Street
New Castle, PA 16105

DR. JAMES ROSEN
724-981-8871
701 N. Hermitage Road
Hermitage, PA 16148

DR. ROWLES
814-587-2438
Conneautville, PA



DR. RICHARD SHELESTAK
724-528-1515
3115 Main St.
West Middlesex, PA 16159

DR. KENNETH WOODS
724-946-3534
212 W. Vine St.
New Wilmington, PA 16142

DR. R. WOODS
724-588-2750
282 Main St.
Greenville, PA 16125

DR. SUSAN YOUNG
724-981-1721
350 Sharon-New Castle Rd.
Farrell, PA 16121

SMILE DENTAL PROGRAM
1-888-833-8441

OBSTETRICIANS:

DUNDORE-HIMES OB-GYN ASSOCIATES
724-458-7737
47 N. Broad Street
Grove City, PA 16127

DR. JOHN GALLAGHER
724-981-4434
1 Dayton Way
Sharon, PA 16146

DR. MICHELLE WRIGHT
Primary Health Network Park Place
350 Sharon-New Castle Road
Farrell, PA 16121

DR. BRENT HURD & MICHELLE TATE
724-981-8070
350 Sharon-New Castle Road
Farrell, PA 16121

DR. REBECCA HANIGOSKY
724-981-4960
480 N. Kerwood Drive, Suite 103
Hermitage, PA 16148

JANICE AGNEW, MIDWIFE
724-981-8070
350 Sharon-New Castle Road
Farrell, PA 16121

DR. JOSEPH MEYN &
DR. DAVID McFADDEN
724-588-4240
90 Shenango Street
Greenville, PA 16125

PHYSICIANS & PEDIATRICIANS

DR. ALLISON ANGOTT

724-981-0825
3110 Highland Rd.
Hermitage, PA 16148

DR. DOINA ANTONESCU

724-981-2246
602 Roemer Blvd.
Farrell, PA 16121

DR. GEORGHE ANTONESCU

724-654-2776
2655 Ellwood Road
New Castle, PA 16101

DR. BETTY JEAN BARDELLA

724-932-2299
865 E. Jamestown Road
Jamestown, PA 16134

DR. DANIEL BEE & DR. HEIDI BEE

724-981-0825
3110 Highland Rd.
Hermitage, PA 16148

DR. PAUL CHLPKA &

DR LAURA PASCI

724-346-6494
Helping Hands Pediatrics
585 East State St.
Sharon, PA 16146

DR. JENNIFER CIAMBOTTI

724-962-3528
6 E. Shenango St.
Sharpsville, PA 16150

DR. ROBERT CICUTO

724-346-1234
2213 Shenango Valley Frwy.
Hermitage, PA 16148

DR. JOHN CUNNINGHAM

724-342-4052
197 W. Silver Street
Sharon, PA 16146

Kids Way Pediatric-Linden Pointe:

DR. CHERYL DUFFY &

DR. JOSEPH FRANK

724-981-1219
3068 Innovation Way
Hermitage, PA 16148

DR. JOYCE ECKARD

724-962-3553
1291 Rutledge Rd., PO Box 114
Transfer, PA 16154

DR. HOWARD ECKSTEIN

724-981-2246
602 Roemer Blvd.
Farrell, PA 16121

Family Healthcare Partners:

DR. DAVID G. HOYT

724-662-4990
400 W. Butler St., Mercer, PA

DR. SUSAN FEDEROFF

724-735-4241
321 E. Mercer St., Harrisville, PA

DR. DAVID W. HEFNER

724-458-5872
675 N. Broad St. Ext., Suite 5
Grove City, PA 16127

DR. EDWARD G. SMITH

DR. CHRIS SPRANDO

724-458-4950
420 Hillcrest Ave.,
Grove City, PA 16127

FARRELL PRIMARY CARE

724-981-8070
350 Sharon-New Castle Road
Farrell, PA 16121

DR. LYNN JOHNSON

724-932-2299
865 E. Jamestown Road.
Jamestown, PA 16134

DR. LYNN JOHNSON
724-253-3428
3393 Perry Highway
Sheakleyville, PA 16151

DR. AMELITA MAMARIL
724-658-5437
3315 Wilmington Road
New Castle, PA 16105

DR. ROBERT MARTSOLF
724-342-6604
Sharon Medical Group
Sharon, PA 16146

DR. LYNNE MCCRILLIS
724-588-4240
Greenville Med. Center
90 Shenango St.
Greenville, PA 16125

DR. MICHAEL MESSINA
724-981-1940
197 Silver Street, Suite 10
Sharon, PA 16146

Hermitage Community Medicine:

DR. MICHELLE THOMPSON
DR. DEBRA SNYDER
DR. CURTIS JANTZI
724-347-4099
705 Brookshire Dr.
Hermitage, PA 16148

DR. SCOTT MORGAN
724-662-4155
Mercer Family Med. Center
405 Greenville Rd.
Mercer, PA 16137

DR. ROBERT MULTARI
724-981-2246
602 Roemer Blvd.
Farrell, PA 16121

DR. ROBERT D. MULTARI
724-981-3731
2120 Likens Lane
Farrell, PA 16121

PRIMARY HEALTH
724-981-2246
220 N. Buhl Farm Drive
Hermitage, PA 16148

DR. JOEL NYSTROM
724-962-3553
1291 Rutledge Rd.
Transfer, PA 16154

DR. RICHARD PAPA
724-645-9910
183 Enclave Drive
New Castle, PA 16101

DR. THOMAS PINEO
724-588-4240
Greenville Med. Center
90 Shenango St.
Greenville, PA 16125

DR. GEORGE REEHER
724-588-4240
Greenville Med. Center
90 Shenango St.
Greenville, PA 16125

DR. ARUN SAWARDEKAR
724-458-8044
635 W. Main Street
Grove City, PA 16127

DR. SHUBHADA SAWARDEKAR
724-458-7005
201-C Erie Street
Grove City, PA 16127

DR. KARY SCHROYER
New Wilmington Family Medicine
565 W. Neshannock
New Wilmington, PA 16142

DR. BENJAMIN SHIPTON
724-662-2650
737 Greenville Rd.
Mercer, PA 16137

STIGLIANO FAMILY PRACTICE

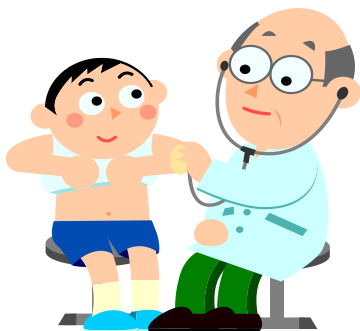
724-342-5335
3140 Highland Rd.
Hermitage, PA 16148

DR. DONALD STOUDT

724-347-7749
69 Elm Avenue
Sharon, PA 16146

DR. ANTHONY UBERTI

724-946-8979
New Wilmington Family Medicine
565 W. Neshannock
New Wilmington, PA 16142





Mercer County PA Pre-K Counts

Main Office

1901 Memorial Drive

Farrell, PA 16121

724-346-4482

Toll Free # 1-866-284-1059

Fax # 724-346-4431

Website: www.mchs-ehs.org

E-mail: info@mchs-ehs.org