

MERCER COUNTY HEAD START / EARLY HEAD START

-----Since 1965-----

Serving children birth to age five, and pregnant women.

PARENT / COMMUNITY RESOURCE HANDBOOK

2010/2011



A Community Action Partnership of Mercer County program;
Delegate agency is Farrell Area School District

TABLE OF CONTENTS

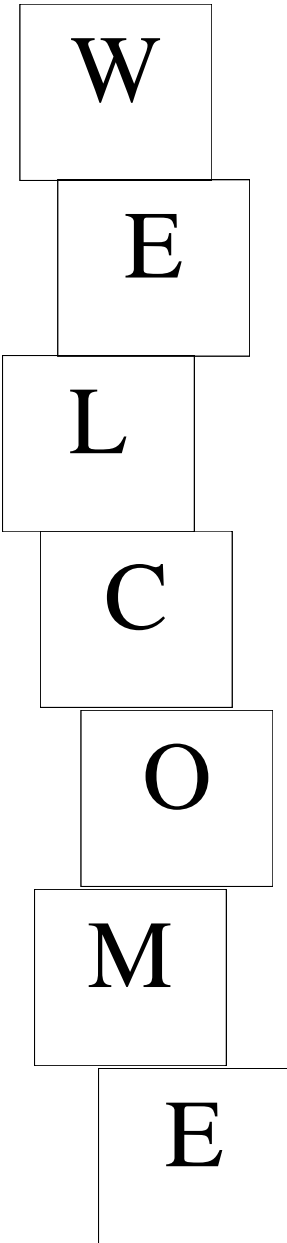
INTRODUCTION _____	4
HS CLASSROOM DIRECTORY _____	6
EHS SITE DIRECTORY _____	6
STAFF DIRECTORY _____	7
PARENT VOLUNTEERS _____	9
PARENT MEETINGS _____	10
POLICY COUNCIL _____	11
HS/EHS PARENT RESPONSIBILITIES _____	12
HS/EHS STAFF RESPONSIBILITIES _____	13
CONFIDENTIALITY STATEMENT _____	14
INTERNAL DISPUTE POLICY _____	14
PROGRAM GUIDELINES _____	15-23
FAMILY & COMMUNITY PARTNERSHIPS _____	15-16
ATTENDANCE _____	15
CUSTODY _____	15
FAMILY SUPPORT STAFF _____	15
HOME VISITING SAFETY _____	16
SMOKE & TOBACCO FREE ENVIRONMENT _____	16
EDUCATION _____	17
CURRICULUM _____	17
ASSESSMENT _____	17
GENERAL INFORMATION _____	17
ARRIVAL / CLOTHING _____	17
TRANSITION _____	18
DISABILITIES & MENTAL HEALTH _____	19
SCREENINGS _____	19
BEHAVIOR MANAGEMENT POLICY _____	19
MENTAL HEALTH REFERRALS & RESOURCES _____	19

TABLE OF CONTENTS

HEALTH & NUTRITION	20-21
PHYSICALS & DENTAL EXAMS	20
DENTAL HYGIENE	20
ILLNESS	20
MEDICATION	21
MEALS	21
CHILD ABUSE	21
TRANSPORTATION	22-23
RELEASING A CHILD FROM HS/EHS	22
CHILD NOT PICKED UP	22
CANCELLATIONS	23
COMMUNITY RESOURCE DIRECTORY	24
AGENCY INDEX	25-27
RESOURCE INDEX	28-34
RESOURCE DIRECTORY	35-53
DENTIST & DENTAL CLINICS/CENTERS	54-55
OBSTETRICIANS	55
PHYSICIANS & PEDIATRICIANS	56-58

W

elcome to the Mercer County Head Start/ Early Head Start program.



You will always be your child’s first and primary teacher and in many cases, this is your child’s first school experience. We appreciate your willingness to allow Head Start/Early Head Start to share in this journey. It is the program’s desire to make this a positive experience for the entire family.

You, as parents and guardians, are the most vital resource to the program and its success. You are encouraged to volunteer, attend meetings and serve on any of the numerous committees, which include the Policy Council—the driving force behind the Mercer County Head Start/Early Head Start program. Your involvement truly does make a difference.

This booklet was designed as a reference guide. Please read it carefully. If you have any questions or concerns, please talk to your child’s teacher or your home visitor.

We envision only success in your child’s future.

Mercer County Head Start/Early Head Start, an affiliate of Community Action Partnership of Mercer County, an Equal Opportunity Employer, does not discriminate on the basis of race, color, national or ethnic origin, sex or disability, or veteran’s status in the administration of any of its educational programs or activities in accordance with applicable Federal Statutes and Regulations.



Mission Statement

"Mercer County Head Start|Early Head Start connects children, families, and communities by partnering quality education with caring support services today for a better tomorrow"

IMPORTANT INFORMATION

CENTER/SITE: _____

FAMILY ADVOCATE / HOME VISITOR: _____

PHONE NUMBER (FAMILY ADVOCATE/HOME VISITOR) _____

TEACHER: _____

CLASSROOM ASSISTANT: _____

CENTER/SITE'S PHONE NUMBER: _____

HOURS/DAYS OF OPERATION: _____

ENROLLMENT DATE: _____

HEAD START CLASSROOM DIRECTORY

Commodore Perry.....	724-253-2054
Farrell I	724-509-1339
Farrell II.....	724-509-1343
Farrell III.....	724-509-1325
Greenville I.....	724-588-0171
Greenville II.....	724-588-2248
Grove City.....	724-458-4944
Hermitage I	724-981-5485
Hermitage II	724-981-5403
Jamestown.....	724-932-5657
Lakeview	724-376-2347
Mercer I.....	724-662-3692 ext.3715
Mercer II.....	724-662-5102
Reynolds I.....	724-646-3041
Reynolds II.....	724-646-1463
Sharon - Case I.....	724-346-0657
Sharon - Case II.....	724-983-1122
Sharon - Case III.....	724-983-0233
Sharon - Musser I.....	724-342-3242
Sharon - Musser II.....	724-342-6095
Sharon - Musser III.....	TBA
Sharpsville	724-962-5915
West Middlesex.....	724-528-1502
Family Advocates (Mercer)	724-662-0170
(Toll Free Mercer).....	866-250-4526
Family Advocates (Sharon)	724-342-3734
(Toll Free Mercer).....	866-250-4527

EARLY HEAD START SITE DIRECTORY

Mercer EHS Site	724-662-0170
Toll Free.....	866-250-4526
Fax.....	724-662-2068
Sharon EHS Site.....	724-342-3734
Toll Free.....	866-250-4527
Fax.....	724-342-3771

STAFF DIRECTORY

DIRECTOR: Terri Lengyel

PROGRAM OPERATIONS DIRECTOR: Wendy King

Service Area Managers

Toni George	Family & Community Partnerships
Gayle Gunn	Fiscal
TBA	Disabilities/Mental Health
Kathy Mielecki	Health/Nutrition
TBA	Early Head Start
TBA	Network Administrator
Jennifer Zilla	Education
Diane Daly	Human Resources

Main Offices

Head Start (John Hetra Bldg Farrell).....	724-346-4482
	Toll Free....866-284-1059
	Fax....724-346-4431
Head Start (Elm Ave, Sharon Office).....	724-342-3734
	Toll Free....866-250-4527
	Fax....724-342-3771
Head Start (Rt. 62 Mercer).....	724-662-0170
	Toll Free....866-250-4526
	Fax....724-662-2068

You Are Important to Head Start/Early Head Start

Parent involvement is an integral part of a successful program for you and your child. It gives you the opportunity to communicate with other adults, and build strong, supportive relationships with staff members. An essential part of the Head Start / Early Head Start program is the involvement of parents in parent education, program planning, and operating activities.

You Can Become An Active Partner

There are many different ways that you can participate to make your Head Start / Early Head Start experience successful. Opportunities for parent involvement include, but are not limited to:

- Attending parent meetings/socializations
- Becoming a member of Policy Council or other committees
- Participating in male involvement activities
- Being a classroom or field trip volunteer
- Participating in home visits
- Attending workshops, trainings, and informal “get-togethers”
- Preparing for education / employment opportunities
- Participating in the annual Program Self-Assessment
- Represent Head Start / Early Head Start at a community event
- Become a classroom substitute



NOTE: PARENTS CAN BECOME A PAID
SUBSTITUTE BY ATTENDING THE
SUBSTITUTE TRAINING PROGRAM OFFERED.
IF YOU ARE INTERESTED, CONTACT THE
HUMAN RESOURCES MANAGER AT
724-509-1341

Parent Volunteers

Partnership with parents has always been the cornerstone of Head Start/Early Head Start. It is only through the active participation of parents and guardians, like you that the Head Start/Early Head Start Program and your child will continue to grow.

Head Start/Early Head Start staff and parents frequently refer to themselves as the Head Start/Early Head Start Family or Community. As with all families and communities, many day-to-day activities require our individual attention. So you might ask, “How Can I Volunteer?”

The answer is there are many ways you can volunteer your services. Examples include:

- Volunteer to make decorations, etc. for center parties that take place throughout the year.
- Volunteer to make phone calls to ask about possible activities for the children.
- Volunteer to spend the day with your child in the classroom.
- Work in the Head Start/Early Head Start office.



PARENT MEETINGS

Parent meetings are held monthly. Attending these meetings provide all parents with the opportunity to work with staff, develop activities for both children and parents, to learn more about the Head Start/Early Head Start Program and develop strong leadership skills. The Parent Committee functions most effectively when all parents attend the meetings and become involved.

Officers for the Parent Committee's are the Chairperson, Vice-Chairperson, Secretary, and Treasurer. Brief outlines of the responsibilities of these officers are as follows:

Chairperson

Maintain order throughout the meeting
Call the meeting to order
Introduce speaker

Vice-Chairperson

Move into Chair position, should the chairperson resign or is absent
Make every attempt to attend all meetings
Assist Chair as needed

Secretary

Provide a copy of the minutes to the Head Start/Early Head Start Office
Record minutes of each meeting
Maintain any correspondence
Send out meeting notices
(all with the help of MCHS/EHS staff)

Treasurer

Give Financial Report

If you are interested in any of these positions, call your classroom teacher, family advocate, home visitor or the Family & Community Partnership Manager Toni George at 724-342-3734 ext. 19.

Policy Council

The Policy Council is composed of representatives from parent committees, community agencies and past parents. At least 51% of the Policy Council must be a parent of children currently enrolled in the Head Start/Early Head Start Program. By becoming a member of this Council, you will be a part of the decision making process for the entire program. Your delegate will attend the meetings and keep you informed of all developments. Additionally, this person is the voice of your center or home base. They are able to carry forward your ideas or concerns to the Policy Council. The Policy Council meets on the First Tuesday of each month at 10:00 am. The meetings generally last about one hour. Meetings will be held at the Farrell Area School Board Room, Farrell, PA. Mileage and childcare reimbursement for attending Policy Council meetings is available to those who meet the Head Start/Early Head Start income eligibility guidelines.

Policy Council Delegate

Policy Council Parent Representatives are the voice of their Head Start/Early Head Start program

Assist with decision –making for the Head Start/Early Head Start Program

Alternate

Alternates are welcome and encouraged to attend all meetings

Substitute if the Delegate is unable to attend meetings

Have no voting privilege

IF YOU ARE INTERESTED IN ANY OF THESE POSITIONS, CALL YOUR CLASSROOM TEACHER, FAMILY ADVOCATE, HOME VISITOR OR THE FAMILY & COMMUNITY PARTNERSHIP MANAGER TONI GEORGE AT 724-342-3734 EXT. 19.

The logo for GoodSearch, featuring the word "GoodSearch" in a blue, sans-serif font. A yellow halo is positioned above the letter "o" in "Good".

YOU CAN HELP MERCER COUNTY HEAD START /
EARLY HEAD START. EVERY SEARCH YOU MAKE USING
WWW.GOODSEARCH.COM WILL DONATE MONEY TO
OUR PROGRAM. WWW.GOODSEARCH.COM IS
POWERED BY YAHOO!

HEAD START/EARLY HEAD START

PARENTS' PROGRAM RESPONSIBILITIES

By enrolling your child in the Head Start/Early Head Start program this fall, you have shown that you are a concerned parent who desires the best possible start in life for your child. This commitment carries the following responsibilities:

As this child's parent/guardian of a center-based child, I will:

- Daily spend at least 30 minutes of quality time with my child.
- Set a consistent bed-time and routine on school nights.
- Attend monthly Center Committee Parent Meetings and keep current on Head Start/Early Head Start activities and opportunities.
- Participate in scheduled parent trainings and male involvement activities.
- Set individualized goals for my child with his/her teacher.
- Call the classroom before class start time to let staff know if my child will be late or absent so the lunch count will be accurate.

Head Start/Early Head Start offers opportunities for parents/guardians to:

- Develop a Family Advancement Plan, assisted by staff (within 45-60 days of enrollment) and updated as needed.
- To pick-up their center-based child when ill, within one (1) hour of notification.
- To provide a written excuse when a child is absent from school. A doctor's excuse is required if a child had a contagious illness or was absent for surgery.
- Provide current physical and dental exams for each child.

In addition, Early Head Start Home-Base parents/guardians agree to:

- Plan 90 minute weekly home visits with the home visitor.
- Follow through with the home activities planned for the upcoming week.
- Schedule the date and time of the next home visit with the home visitor before the visit is completed. If unable to keep the appointment call and reschedule with your home visitor.
- Attend socializations as they are very important for your child to receive the most benefits from the program.

STAFF RESPONSIBILITIES

All Head Start/Early Head Start Staff will:

- Abide by the Mercer County Head Start/Early Head Start confidentiality policy.
- Report any child abuse, whether suspected or verified, following Mercer County Head Start/Early Head Start's policies and procedures.
- Be knowledgeable of all community resources and refer families as necessary.

Head Start Classroom Staff will:

- Notify parents of field trips taken during the school year.
- Notify parents whenever their child is injured in the classroom.
- Complete a minimum of two (2) home visits each year. (Teacher)
- Complete a minimum of three (3) social service home visits each year. (Family Advocate)
- Complete a minimum of two (2) parent-teacher conferences per year.

In addition Early Head Start Home-Based program staff are required to:

- Plan the date and time of the next (weekly) home visit with parent.
- Plan weekly home visits lasting 1 ½ hours with parent and child.
- Plan monthly socializations.



I am free to be the best I can be.

Confidentiality

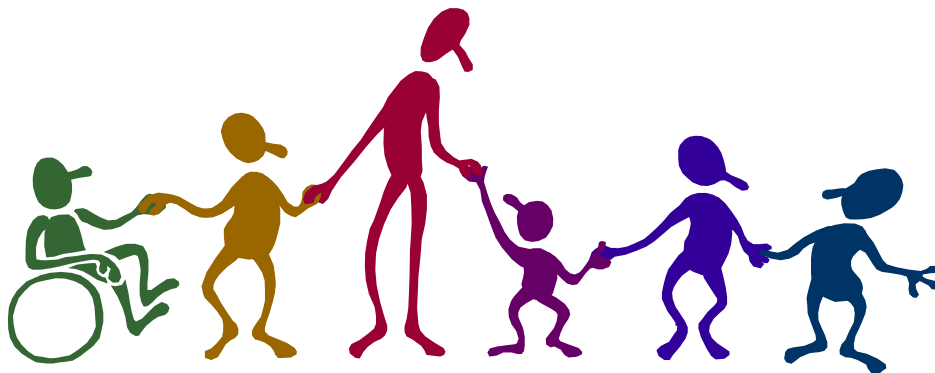
The Mercer County Head Start / Early Head Start Program believes in the integrity of all our clients and will do everything possible to ensure that all information obtained on the families enrolled in the program will be kept in the strictest confidence. You will be asked to sign a confidentiality statement at your child's parent orientation.

Conflict Resolutions

Internal Dispute Resolution Policy and/or Impasse Procedure

In the very best of situations, not everyone can always agree on every given issue. When a problem among staff, parents and community representation cannot be resolved, the Internal Dispute Resolution Policy and Impasse Procedure can be used. This policy is to ensure that any concerns are addressed in a timely and fair manner.

Parent concerns which cannot be resolved through discussion with your classroom teacher, family advocate or home visitor should be referred to the Director; Terri Lengyel, at the main office 724-346-4482 ext. 1335 or 1-866-284-1059.



PROGRAM GUIDELINES

FAMILY AND COMMUNITY PARTNERSHIP

I. Attendance ~

Head Start Center Based (Classrooms)

It is very important for your child to attend school on a regular basis for several reasons. It allows your child to become familiar with routines, to learn new skills and develop the ability to work and play with other children individually and in a group.

Your child's attendance **should** be kept above 85%. If your child is absent, please send in an excuse to your child's classroom teacher. Should your child's attendance fall below 85% your child's Family Advocate will be contacting you to create a plan to help you improve your child's attendance.

Early Head Start Home Based

Participation on a weekly basis is important for your child to receive the most benefits from the program. Families that frequently miss home visits will be asked to create a plan to help improve their participation.

II. Custody ~

Custody paperwork is your responsibility. Custody agreements and court orders must be on file at the center in order for Head Start / Early Head Start to abide by the agreement. Please give a copy of all current custody orders to your Family Advocate or Home Visitor.

III. Family Support Staff ~

Each family will be assigned a **family advocate** or **home visitor** that will meet with them on a regular basis throughout the year.

The Family Advocate/Home Visitor will:

- Discuss your participation in program activities.
- Help you identify strengths and establish goals by developing a Family Advancement Plan.
- Offer information and referrals to community agencies based on the family needs.
- Provide literacy information and materials for the child and family.
- Serve as a support person for your family.

The **Family Advocate** will meet with you a minimum of three times during the year.

The **Home Visitor** will visit you weekly, which is a requirement in the Early Head Start home-based option.

If you are unable to keep a scheduled home visit, please contact your family advocate or home visitor as soon as possible to arrange another time.

IV. Home Visiting Safety ~

Staff will always schedule home visits with you in advance. If an emergency or unforeseen situation would occur, please notify the staff immediately if you are unable to keep your home visit. Please maintain an accessible pathway to the home, such as clearing the walkway of snow. Please secure pets so they are not running loose in the yard or house. If a home visit is scheduled in the late afternoon or evening, please leave a porch light on for staff.

V. Smoke & Tobacco Free Environment Policy ~

To promote a healthy environment for families, and in compliance with federal regulation, Mercer County Head Start/Early Head Start provides a smoke and tobacco-free environment, designed to eliminate smoke and tobacco exposure to children, parents, and staff in our program. **We request that parents, family and others present not smoke or use tobacco products during home visits or on program property.** We also ask that cigarettes and other tobacco related items not be visible during home visits. We appreciate your cooperation in supporting this initiative and joining us in providing the healthiest environment possible for everyone involved in our program.



***BEING A FATHER IS A BIG RESPONSIBILITY
THAT BRINGS BIG REWARDS!***

EDUCATION

I. Curriculum ~

Mercer County Head Start classrooms utilize the *Creative Curriculum for Preschool* a nationally recognized curriculum for 3-5 year old children.

This curriculum allows for a variety of developmentally appropriate experiences in the classroom setting, while maintaining the flexibility required addressing the individual needs of each enrolled child. Your child will have the opportunity to participate in whole group, small group and individual learning activities daily. Additionally, he/she will experience both teacher led and child initiated learning opportunities. Each parent is invited to volunteer in their child's classroom often, which is the best way to learn about and understand our curriculums. You will also be a vital part of setting and updating individual goals for your child throughout the year.

You are encouraged to review the parent information on the Creative Curriculum that is in your child's classroom.

The Early Head Start home-based curriculum is *Parents As Teachers (PAT)*. It is based on the philosophy that a parent is their child's first and best teacher. It provides information to the parent on child development, including toys that can be made at home for play time to encourage development. *PAT* also has topics in the areas of health, safety and nutrition.

II. Assessment ~

Head Start - Ongoing observation and assessments are completed on each child throughout the year. Assessment results are shared with parents at two parent/teacher conferences per year, the final education home visit and at other times upon parent request. Child assessment information will only be shared with the parents or legal guardians of each child.

Early Head Start - Ongoing observation and assessments are completed on each child throughout the year.

III. General Information ~

Arrival: Students arrive at school according to their bus schedules or school district's drop-off schedule. If a parent transports their child to school, the parent must accompany the child to the classroom. Children are not permitted in the classroom before that site's scheduled start time. Also, children must be picked up at the sites end time. Classroom staff cannot be responsible for children dropped off early or picked up late.

Clothing: Please choose comfortable clothing which allows your child to play and create without being afraid of "getting dirty." Going outside is part of our daily curriculum. Please dress your child appropriately for the weather, including hats, gloves and boots, when necessary. Rubber soled shoes, preferably sneakers, are recommended. A backpack or book bag is beneficial but not required.

Field Trips: Mercer County Head Start classrooms schedule field trips periodically throughout the year. Program staff depends on parents to assist in planning field trips and accompanying the children and staff when possible.

WE ENCOURAGE YOU TO STAY ACTIVELY INVOLVED IN YOUR CHILD'S EDUCATION! YOU ARE YOUR CHILD'S FIRST AND MOST IMPORTANT TEACHER!!

TRANSITION

Transition is the process of moving your child successfully from one program to another.

I. Early Head Start Transition ~

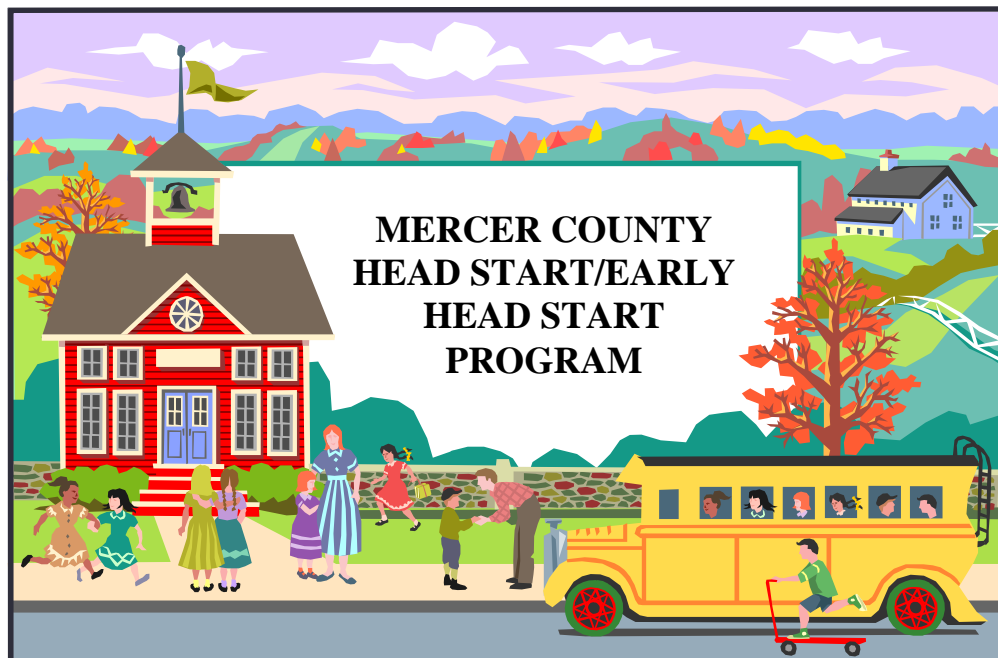
At two years, six months of age, each Early Head Start child will begin the transition process to move them from Early Head Start to the next appropriate placement. Staff will work closely with families to ensure a smooth transition working on an individualized plan which includes parent input, available options and resources.

II. Head Start Transition ~

Head Start children begin their transition to Kindergarten the very first day of enrollment. Visits to Kindergarten classrooms, classroom activities, kindergarten registration, parent meetings and school district meetings help make this a smooth transition.

III. Kindergarten Transition ~

Mercer County Head Start has spring meetings with each school district to help make this a smooth transition



DISABILITIES AND MENTAL HEALTH

Enrollment opportunities in the Head Start/Early Head Start program are available for children with disabilities in need of related services. Related services include, but are not limited to speech therapy, specialized instruction, occupational therapy, etc. Placement options such as Dual Programming may also be available.

Mercer County Head Start/Early Head Start currently has strong collaborations with county Early Intervention programs for the provision of evaluations and services. Parental permission must be obtained.

I. Screenings ~

Head Start:

All Head Start children will be screened within forty-five days of enrollment. Each child will be screened in the following areas: motor, cognitive, speech, language, vision, behavior and hearing. The results will be mailed to parents with recommendations as needed.

Early Head Start:

All Early Head Start children will receive a developmental screening within forty-five days of enrollment into the program and at regular intervals. These age appropriate screening include activities related to gross motor, personal social, language, fine motor, adaptive and behavior. The results will be discussed with parent/caregivers along with recommendations and referral information if needed.

Hearing, vision, and dental screenings will take place within forty-five days of enrollment and annually during the child's first three years. Resources for follow-up of any identified concerns will be discussed with the parents/caregivers as necessary.

II. Behavior Management Policy ~

The Mercer County **Head Start** Behavior Management Policy was created to ensure that all children enrolled in our program have the opportunity to learn in a safe, positive and nurturing classroom environment. Your child's teacher or family advocate will review this policy with you at Parent Orientation (meet and greet) or upon enrollment into the program. The policy is very specific and we ask that you read it carefully.

III. Mental Health Referrals & Resources ~

Mercer County Head Start/Early Head Start currently has a strong relationship with a county mental health agency. If a family/child is in need of services or you would like to arrange a consultation with our Mental Health Consultant you can contact your Classroom Teacher, Home Visitor, Family Advocate or the Disabilities/Mental Health Manager.

HEALTH AND NUTRITION

I. Physicals & Dental Exams ~

The federal government requires that all HS/EHS children have a current physical and dental exam. They must be updated at least once a year for Head Start children and as recommended in the EPSDT schedule for EHS children (2, 4, 6, 9, 12, 15, 18, 24, 30 and 36 mos.). Head Start exams are due to the health office within one month of enrollment.

Early Head Start: A copy of the child's most recent exam is due to the EHS manager within one month of enrollment.

II. Dental Hygiene ~

Dental hygiene is an important part of the HS/EHS program. Dental hygiene is practiced after each meal and snack. Poor dental hygiene greatly affects a child's health, nutrition and speech.

III. Illness ~

If your child looks or is acting sick, please keep them home! These are signs that a child is coming down with a cold or infectious disease. These symptoms are usually contagious, so keeping the child at home will safeguard both your child and others in the classroom and at play groups. If the early stage symptoms are treated at once, the period of absence from school will be shortened.

Symptoms such as those listed below are also **obvious reasons to keep your child home:**

- Fever of 101 F orally or higher. (If your child is taking medication to keep a fever down, **they should not come to school.** They must be free of fever for 24 hours without medication.)
- Severe nasal congestion/runny nose
- Red, itchy or runny eyes
- Persistent sneezing or coughing
- Sore throat
- Unusual rash
- Earache
- Toothache
- Diarrhea
- Vomiting
- Severe headache
- Asthma flare-ups

Whenever your child is unable to attend school, please phone the classroom teacher by 9:00 a.m. and report the reason for absence. If the absence is due to a contagious illness, notify staff immediately. Any child who has been absent due to a contagious illness or recovering from surgery, must have a doctor's excuse to return to school.

Lice – Children with live lice will be sent home immediately. We will be following the nit policy of your school district, which for most is a “zero nit policy”. Children with nits will be sent home based on school policy. Children may return after they have been checked by the **Head Start** nurse.

**** Children being sent home must be picked up within 1 hour of notification.**

IV. Medication ~

Medications rarely need to be given during the Head Start day. Most can be given before or after school hours. In the rare event that a medication must be given during the Head Start day, the parent is required to set up an appointment with the Health & Nutrition Manager to complete necessary paperwork from the parent and physician. The parent may administer the medication to their child as necessary or make other arrangements with the Health & Nutrition Manager.

MEDICATIONS SHOULD NEVER BE SENT TO SCHOOL WITH YOUR CHILD.

V. Meals ~

All Head Start children receive a morning snack and a lunch at no cost to the family. These meals are served family style and children are encouraged, but never forced, to try new items. Food is never used as a punishment or reward. Snack does not take the place of breakfast. Please have your child eat breakfast before coming to school.

Please let staff know if there are specific ethnic foods you would like to see served in the program. If your child has special dietary needs such as an allergy to milk this must be documented by a physician on a prescription pad and given to the Health & Nutrition Manager. The doctor must also include the substitution for the restricted food.

All meals served to participants under the Child and Adult Care Food Program are served at no separate charge regardless of race, color, sex, age, handicap or national origin. There is no discrimination in admissions policy, meal service or use of facilities. Any person who believes that he or she has been discriminated against in any USDA related activity should write to the Secretary of Agriculture, Washington D.C. 20250.

A snack is provided to children and adults attending Early Head Start socializations/playgroups.



Snack Time!

Snacking is important for children!

Their tummies are little.

Children cannot eat enough food with just 3 meals.

Children grow best with 3 meals and 2 to 3 small snacks each day.

VI. Child Abuse ~

The Mercer County Head Start/Early Head Start staff are mandated reporters according to the Child Protective Service Law. When any staff has reasonable cause to suspect a child is being abused or neglected, Childline will be called. Mercer County Head Start/Early Head Start encourages parents who suspect child abuse to contact Childline at 1-800-932-0313.

TRANSPORTATION

Our transportation system provides a safe way for preschool children to get to school, but it requires the cooperation of parents and staff. *Transportation is available for Early Head Start children to attend socialization activities. Please make arrangements with your home visitor at least two (2) days in advance of the socialization.*

- Parents and/or a designated guardian **MUST** escort the child to and from the bus.
- The bus is permitted to wait **1 minute** for pick-up or drop-off.
- **Children must wear seat belts and safety vests on the bus.** Bus monitors will help the children with buckling up.
- Use your red/green dot. Place in an area that the bus monitor and driver can see. Red if you want the bus to stop, green if you do not.

I. **Releasing a Child from Head Start ~**

When your child is picked up at the classroom or from the bus it **MUST** be a person that is listed on the Authorization to Release Form. He/she must be 18 years of age or older **and MUST have photo identification.** If the person who attempts to get the child is not listed on the Authorization to Release Form Head Start staff will not let the child go to that adult.

If you are asking someone from the Authorization to Release Form to receive your child from school/bus you must let the classroom staff know this ahead of time. Staff **will not** release to persons on the release form without receiving notification from the parents/guardians.

If additions/deletions need to be made to the Authorization to Release Form at any time you need to call your Family Advocate to make an appointment to do so.

You may not call into the classroom or to the Family Advocate to add/delete people. It must be done in person so a new Authorization to Release Form can be completed.

It is your responsibility to keep all phone numbers and addresses current for all persons on the Emergency Contact Form. Changing a phone number or an address **CAN** be done over the phone to the classroom or to the Family Advocate/Home Visitor.

II. **Head Start Children Not Picked Up On Time ~**

When children are not picked up by the designated time, the following procedure will be followed:

1. We will attempt to reach you by telephone. If we are unable to reach you, we will notify the individual(s) you have listed on your “Emergency Contact Sheet” and “Child Release Authorization Form” to come and pick up your child.
2. If we are unable to reach you by 3:30 p.m., or an individual who is listed on the Authorization to Release Form, the local authorities and **Children and Youth Services** will be called.

III. Cancellations ~

In case of inclement weather or unforeseen emergencies Head Start/Early Head Start will follow your local school district.

If your school district's classes are cancelled Head Start/Early Head Start will be closed. If there is a two-hour delay, Head Start/Early Head Start is on a two-hour delay also. Please listen to the following radio and television stations:

- Radio:** WPIC 790 (Sharon)
Y-103 102.9 (Sharon/Youngstown)
95.1 (Grove City)
WGRP 107.1 (Greenville)
- Television:** Channels 21 NBC, 27 CBS or 33 ABC (Youngstown)



Community Resource Directory 2010-2011

Created exclusively for Mercer County
Head Start/Early Head Start families and staff.

We encourage you to use this as a quick reference guide in researching services best suited to your needs. Mercer County Head Start/Early Head Start makes no guarantees regarding the policies or quality of services provided by the agencies and organizations listed.

Report changes/corrections by calling 724-342-3734 x10.

AGENCY INDEX

AMERICAN RED CROSS	35
ANGEL FOOD MINISTRIES	35
ARK HOUSE – SOUTHWEST GARDENS	35
ASSOCIATION FOR CHILDREN WITH LEARNING DISABILITIES	35
AW/ARE, INC.	35
BETTER BUSINESS BUREAU OF WESTERN PENNSYLVANIA	36
BLUE CROSS/BLUE SHIELD SPECIAL CARE	36
BUREAU OF PA CHILD SUPPORT ENFORCEMENT	36
CATHOLIC CHARITIES COUNSELING & ADOPTION AGENCY	36
CHILD CARE INFORMATION SERVICES (C.C.I.S.)	36
CHILDREN’S AID SOCIETY OF MERCER COUNTY	36
CHILDREN’S CENTER OF MERCER COUNTY	36
CHILDREN’S HOSPITAL OF PITTSBURGH	37
CITY RESCUE MISSION	37
CLARK VOLUNTEER FIRE DEPARTMENT	37
COMMUNITY ACTION PARTNERSHIP OF MERCER COUNTY	37
COMMUNITY COUNSELING CENTER OF MERCER COUNTY	37
COMPREHENSIVE CHILDREN & FAMILY SERVICES	37
CONSUMER CREDIT COUNSELING SERVICES OF MERCER COUNTY	37
DEPENDABLE TAXI (PHIL’S)	38
DIVERSIFIED FAMILY SERVICES	38
DOMESTIC RELATIONS	38
E.R.A.S.E. (ANTI-DRUG COALITION)	38
FAMILY PLANNING SERVICES OF MERCER COUNTY	38
FARRELL AREA SCHOOL DISTRICT’S EARLY INTERVENTION PROGRAM	38
FARRELL FIRE DEPARTMENT	39
FREDONIA VOLUNTEER FIRE DEPARTMENT	39
GERALDINE APARTMENTS	39
GOOD SHEPHERD CENTER, INC.	39
GRACE COMMUNITY FOOD PANTRY	39
GREENVILLE AREA LEISURE SERVICES ASSOCIATION (GALSA)	39
GREENVILLE FIRE DEPARTMENT	39
GREENVILLE LITERACY COUNCIL	40
GREENVILLE PUBLIC LIBRARY	40
GROVE CITY COLLEGE	40
GROVE CITY COMMUNITY LIBRARY	40
GROVE CITY EDUCATION CENTER FOR ADULTS	40
GROVE CITY MEDICAL CENTER	40
GROVE CITY VOLUNTEER FIRE DEPARTMENT	40
HELPING HANDS	41
HEMPFIELD TOWNSHIP VOLUNTEER FIRE DEPARTMENT	41
HERMITAGE VOLUNTEER FIRE DEPARTMENT	41
IMMACULATE HEART CHURCH – SHARING SHED	41
JAMESTOWN FOOD PANTRY	41
JB Taxi	41
JEFFERSON TOWNSHIP VOLUNTEER FIRE DEPARTMENT	41
JOSHUA’S HAVEN CITY MISSION	41

KEYSTONE BLIND ASSOCIATION	42
KEYSTONE CHARTER SCHOOL	42
LAKEVIEW AREA PUBLIC LIBRARY	42
LALECHE LEAGUE	42
LAUREL TECHNICAL INSTITUTE	42
LITERACY COUNCIL OF MERCER COUNTY	42
LIVING ROOM LEARNING (GREENVILLE LITERACY COUNCIL)	42
MEALS ON WHEELS	42
MERCER AREA LIBRARY	43
MERCER COUNTY BEHAVIORAL HEALTH COMMISSION (BHC)	43
MERCER COUNTY BOARD OF ASSISTANCE (DPW)	43
MERCER COUNTY CAREER CENTER	43
MERCER COUNTY CAREER CENTER PRESCHOOL	43
MERCER COUNTY CAREER LINK	43
MERCER COUNTY CASA	44
MERCER COUNTY CHILDREN AND YOUTH SERVICES	44
MERCER COUNTY COMMUNITY TRANSIT	44
MERCER COUNTY COOPERATIVE EXTENSION	44
MERCER COUNTY FAMILY CENTERS	44
MERCER COUNTY HABITAT FOR HUMANITY	44
MERCER COUNTY HOUSING AUTHORITY	45
MERCER COUNTY JUVENILE ADVISORY BOARD	45
MERCER COUNTY STATE HEALTH CENTER	45
MERCER EAST END VOLUNTEER FIRE DEPARTMENT	45
MIDWESTERN INTERMEDIATE UNIT IV	45
MINORITY HEALTH ADVOCACY	45
NEED-A-PHYSICIAN	45
NEIGHBORHOOD-BASED FAMILY INTERVENTION CENTER	45
NEIGHBORHOOD NETWORK EDUCATION TEAM	46
NORTH SHARON VOLUNTEER FIRE COMPANY	46
NORTHWEST LEGAL SERVICES	46
OFFICE OF VOCATIONAL REHABILITATION	46
PAOLETTA PSYCHOLOGICAL SERVICES	46
PARENT NETWORK	46
PARENTS OF CHILDREN WITH SPECIAL NEEDS	46
PATAGONIA VOLUNTEER FIRE DEPARTMENT	47
PENN POWER C.A.R.E.S. PROGRAM	47
PENN STATE – SHENANGO CAMPUS	47
PENNSYLVANIA CHILDREN’S HEALTH INSURANCE PROGRAM (CHIP)	47
PENNSYLVANIA DEPARTMENT OF HEALTH	47
PENNSYLVANIA EMERGENCY MANAGEMENT AGENCY	47
PENNSYLVANIA LAWYER REFERRAL SERVICE	47
PENNSYLVANIA PUBLIC UTILITY (WATER, GAS, ELECTRIC)	47
PENNSYLVANIA STATE POLICE (MERCER BARRACKS)	47
PEOPLE IN NEED	48
PINE TOWNSHIP ENGINE COMPANY	48
POISON CONTROL CENTER	48
PREGNANCY RESOURCE CENTER	48
PRESCHOOL CONNECTION	48
PRIMARY HEALTH NETWORK	48

PRINCE OF PEACE	49
PROTECTION FROM ABUSE	49
RESPIRE CARE	49
SALVATION ARMY	49
SHARING & CARING FOR PERSONS IN NEED	49
SHARON COMMUNITY HEALTH CENTER	50
SHARON FIRE DEPARTMENT	50
SHARON REGIONAL BEHAVIORAL HEALTH SERVICES	50
SHARON REGIONAL BREAST CARE CENTER	50
SHARON REGIONAL DIAGNOSTIC & IMAGING CENTER	50
SHARON REGIONAL HEALTH SYSTEM	50
SHARPSVILLE VOLUNTEER FIRE DEPARTMENT	50
SHENANGO VALLEY COMMUNITY LIBRARY	50
SHENANGO VALLEY SHUTTLE BUS	51
SHENANGO VALLEY URBAN LEAGUE	51
SOCIAL SECURITY ADMINISTRATION	51
SOUTH PYMATUNING TOWNSHIP VOL. FIRE DEPARTMENT, STA. #78	51
SPECIAL KIDS NETWORK	51
SPRINGFIELD TOWNSHIP VOLUNTEER FIRE DEPARTMENT	51
ST. JOHN'S EPISCOPAL CHURCH	51
STD CLINIC OF MERCER COUNTY	51
STEY NEVANT LIBRARY	52
STONEBORO VOLUNTEER FIRE COMPANY	52
THE WOMEN'S CENTER - SHARON REGIONAL HEALTH SYSTEM	52
THIEL COLLEGE	52
TRANSFER VOLUNTEER FIRE DEPARTMENT	52
UNITED WAY OF MERCER COUNTY	52
UPMC Horizon Hospitals	52
UPMC Womancare Center	52
VICTIM / WITNESS PROGRAM	52
Vocational & Psychological Services	53
WEST CENTRAL CENTER FOR THE DEAF	53
WEST MIDDLESEX VOLUNTEER FIRE DEPARTMENT	53
WEST SALEM VOLUNTEER FIRE DEPARTMENT	53
WHEATLAND VOLUNTEER FIRE DEPARTMENT	53
WIC (SEE SHENANGO VALLEY URBAN LEAGUE)	51

RESOURCE INDEX

CHILD CARE

CHILD CARE INFORMATION SERVICES (C.C.I.S.)	36
MERCER COUNTY CAREER CENTER PRESCHOOL	43
RESPIRE CARE	49

CHILD ISSUES

BUREAU OF PA CHILD SUPPORT ENFORCEMENT	36
CHILDREN'S AID SOCIETY OF MERCER COUNTY	36
MERCER COUNTY CASA	44
MERCER COUNTY CHILDREN AND YOUTH SERVICES	44
MERCER COUNTY FAMILY CENTERS	44
MERCER COUNTY JUVENILE ADVISORY BOARD	45

CLOTHING

GOOD SHEPHERD CENTER, INC.	39
HELPING HANDS	41
PREGNANCY RESOURCE CENTER	48
PRINCE OF PEACE	49
SALVATION ARMY – THRIFT STORES	49

CONSUMER AFFAIRS

BETTER BUSINESS BUREAU OF WESTERN PENNSYLVANIA	36
COMMUNITY ACTION PARTNERSHIP OF MERCER COUNTY	37
GREENVILLE AREA LEISURE SERVICES ASSOCIATION (GALSA)	39

COUNSELING SERVICES

CATHOLIC CHARITIES COUNSELING & ADOPTION AGENCY	36
COMMUNITY COUNSELING CENTER OF MERCER COUNTY	37
COMPREHENSIVE CHILDREN & FAMILY SERVICES	37
E.R.A.S.E. (ANTI-DRUG COALITION)	38

COUNSELING SERVICES Continued.....

MERCER COUNTY BEHAVIORAL HEALTH COMMISSION (BHC)_____ 43
PAOLETTA PSYCHOLOGICAL SERVICES_____ 46
SHARON REGIONAL BEHAVIORAL HEALTH SERVICES_____ 50
SHENANGO VALLEY URBAN LEAGUE_____ 51
Vocational & Psychological Services_____ 53

DISABILITIES

ASSOCIATION FOR CHILDREN WITH LEARNING DISABILITIES_____ 35
CHILDREN’S CENTER OF MERCER COUNTY_____ 36
FARRELL AREA SCHOOL DISTRICT’S EARLY INTERVENTION PROGRAM_____ 38
KEYSTONE BLIND ASSOCIATION_____ 42
MERCER COUNTY BEHAVIORAL HEALTH COMMISSION (BHC)_____ 43
MIDWESTERN INTERMEDIATE UNIT IV_____ 45
OFFICE OF VOCATIONAL REHABILITATION_____ 46
PARENT NETWORK_____ 47
PRESCHOOL CONNECTION_____ 48
SHARING AND CARING FOR PERSONS IN NEED OF MERCER COUNTY, INC._____ 49
SPECIAL KIDS NETWORK_____ 51
WEST CENTRAL CENTER FOR THE DEAF_____ 53

DOMESTIC VIOLENCE

AW/ARE, INC._____ 35
PROTECTION FROM ABUSE_____ 49

EDUCATION/TRAINING

GROVE CITY COLLEGE_____ 39
KEYSTONE CHARTER SCHOOL_____ 41
LAUREL TECHNICAL INSTITUTE _____ 42
MERCER COUNTY CAREER CENTER_____ 43
MERCER COUNTY COOPERATIVE EXTENSION_____ 44
NEIGHBORHOOD NETWORK EDUCATION TEAM_____ 46

EDUCATION/TRAINING Continued...

PENN STATE – SHENANGO CAMPUS _____ 47
THIEL COLLEGE _____ 52

EMERGENCY FOOD/ASSISTANCE

AMERICAN RED CROSS _____ 35
CITY RESCUE MISSION _____ 37
GOOD SHEPHERD CENTER, INC. _____ 39
HELPING HANDS _____ 41
MERCER COUNTY BOARD OF ASSISTANCE (DPW) _____ 43
SALVATION ARMY _____ 49
SHENANGO VALLEY URBAN LEAGUE _____ 51

EMPLOYMENT

MERCER COUNTY CAREER CENTER _____ 43

ENERGY ASSISTANCE

COMMUNITY ACTION PARTNERSHIP OF MERCER COUNTY _____ 37
MERCER COUNTY BOARD OF ASSISTANCE (DPW) _____ 43
PENN POWER C.A.R.E.S. PROGRAM _____ 47
PENNSYLVANIA PUBLIC UTILITY (WATER, GAS, ELECTRIC) _____ 47
PRINCE OF PEACE _____ 49
SALVATION ARMY _____ 49

EXPECTANT MOTHERS, INFANT & TODDLER SUPPORT

CATHOLIC CHARITIES - PROJECT WIN (WOMEN IN NEED) _____ 36
PEOPLE IN NEED _____ 48
PREGNANCY RESOURCE CENTER _____ 49
SHENANGO VALLEY URBAN LEAGUE _____ 51

FINANCIAL/LEGAL

COMMUNITY ACTION PARTNERSHIP OF MERCER COUNTY _____ 37
CONSUMER CREDIT COUNSELING SERVICES OF MERCER COUNTY _____ 37

FINANCIAL/LEGAL Continued...

DOMESTIC RELATIONS _____	39
MERCER COUNTY BOARD OF ASSISTANCE (DPW) _____	43
NORTHWEST LEGAL SERVICES _____	46
PENNSYLVANIA LAWYER REFERRAL SERVICE _____	47
PROTECTION FROM ABUSE _____	49
SOCIAL SECURITY ADMINISTRATION _____	51
VICTIM / WITNESS PROGRAM _____	52

FIRE/RESCUE DEPARTMENTS

CLARK VOLUNTEER FIRE DEPARTMENT _____	37
FARRELL FIRE DEPARTMENT _____	39
FREDONIA VOLUNTEER FIRE DEPARTMENT _____	39
GREENVILLE FIRE DEPARTMENT _____	39
GROVE CITY VOLUNTEER FIRE DEPARTMENT _____	40
HEMPFIELD TOWNSHIP VOLUNTEER FIRE DEPARTMENT _____	41
HERMITAGE VOLUNTEER FIRE DEPARTMENT _____	41
JEFFERSON TOWNSHIP VOLUNTEER FIRE DEPARTMENT _____	41
MERCER EAST END VOLUNTEER FIRE DEPARTMENT _____	45
NORTH SHARON VOLUNTEER FIRE COMPANY _____	46
PATAGONIA VOLUNTEER FIRE DEPARTMENT _____	47
PENNSYLVANIA EMERGENCY MANAGEMENT AGENCY _____	47
PENNSYLVANIA STATE POLICE (MERCER BARRACKS) _____	47
PINE TOWNSHIP ENGINE COMPANY _____	48
SHARON FIRE DEPARTMENT _____	50
SHARPSVILLE VOLUNTEER FIRE DEPARTMENT _____	50
SOUTH PYMATUNING TOWNSHIP VOL. FIRE DEPT., STATION #78 _____	51
SPRINGFIELD TOWNSHIP VOLUNTEER FIRE DEPARTMENT _____	51
STONEBORO VOLUNTEER FIRE COMPANY _____	52
TRANSFER VOLUNTEER FIRE DEPARTMENT _____	52
WEST MIDDLESEX VOLUNTEER FIRE DEPARTMENT _____	53
WEST SALEM VOLUNTEER FIRE DEPARTMENT _____	53
WHEATLAND VOLUNTEER FIRE DEPARTMENT _____	53

FOOD

ANGEL FOOD MINISTRIES	35
CITY RESCUE MISSION	37
GOOD SHEPHERD CENTER, INC.	39
GRACE COMMUNITY FOOD PANTRY	39
HELPING HANDS	41
IMMACULATE HEART CHURCH (SHARING SHED)	41
JAMESTOWN FOOD PANTRY	41
MEALS ON WHEELS	42
PRINCE OF PEACE CENTER	49
SALVATION ARMY	49
ST. JOHN'S EPISCOPAL CHURCH	51

HEALTH CARE

CHILDREN'S HOSPITAL OF PITTSBURGH	37
FAMILY PLANNING SERVICES OF MERCER COUNTY	38
GROVE CITY MEDICAL CENTER	40
KEYSTONE BLIND ASSOCIATION	42
MERCER COUNTY STATE HEALTH CENTER	45
MINORITY HEALTH ADVOCACY	45
PENNSYLVANIA DEPARTMENT OF HEALTH	47
POISON CONTROL CENTER	48
PRIMARY HEALTH NETWORK	48
SHARON COMMUNITY HEALTH CENTER	50
SHARON REGIONAL BEHAVIORAL HEALTH SERVICES	50
SHARON REGIONAL BREAST CARE CENTER	50
SHARON REGIONAL DIAGNOSTIC & IMAGING CENTER	50
SHARON REGIONAL HEALTH SYSTEM	50
SHENANGO VALLEY URBAN LEAGUE	51
STD CLINIC OF MERCER COUNTY	51
THE WOMEN'S CENTER (SHARON REGIONAL HEALTH SYSTEMS)	52
UPMC Horizon Hospital	52
UPMC WOMANCARE CENTER	52

HEALTH INSURANCE

BLUE CROSS/BLEU SHIELD SPECIAL CARE_____	36
PA CHILDREN’S HEALTH INSURANCE PROGRAM (CHIP)_____	47

HOUSING

ARK HOUSE (SOUTHWEST GARDENS)_____	35
COMMUNITY ACTION PARTNERSHIP OF MERCER COUNTY_____	37
GERALDINE APARTMENTS_____	39
JOSHUA’S HAVEN CITY MISSION_____	41
MERCER COUNTY HABITAT FOR HUMANITY_____	44
MERCER COUNTY HOUSING AUTHORITY_____	45
PRINCE OF PEACE_____	49

INFORMATION/REFERRAL

NEED-A-PHYSICIAN_____	45
UNITED WAY OF MERCER COUNTY_____	52

LIBRARIES

GREENVILLE PUBLIC LIBRARY_____	40
GROVE CITY COMMUNITY LIBRARY_____	40
LAKEVIEW AREA PUBLIC LIBRARY_____	42
MERCER AREA LIBRARY_____	43
SHENANGO VALLEY COMMUNITY LIBRARY_____	50
STEY NEVANT LIBRARY_____	52

LITERACY PROGRAMS/ABE/GED

GREENVILLE LITERACY COUNCIL_____	40
GROVE CITY EDUCATION CENTER FOR ADULTS_____	40
HELPING HANDS_____	41
LITERACY COUNCIL OF MERCER COUNTY_____	42
LIVING ROOM LEARNING (GREENVILLE LITERACY COUNCIL)_____	42
MERCER COUNTY CAREER CENTER_____	43

PARENTING CLASSES AND SUPPORTS

CATHOLIC CHARITIES COUNSELING & ADOPTION AGENCY _____ 36
CHILDREN’S AID SOCIETY OF MERCER COUNTY _____ 36
DIVERSIFIED FAMILY SERVICES _____ 38
LALECHE LEAGUE _____ 42
NEIGHBORHOOD-BASED FAMILY INTERVENTION CENTER _____ 45
PARENTS OF CHILDREN WITH SPECIAL NEEDS _____ 47
PRINCE OF PEACE _____ 49

TRANSPORTATION

DEPENDABLE TAXI (PHIL’S) _____ 38
JB TAXI _____ 41
MERCER COUNTY COMMUNITY TRANSIT _____ 44
SHENANGO VALLEY SHUTTLE BUS _____ 51

WEATHERIZATION

COMMUNITY ACTION PARTNERSHIP OF MERCER COUNTY _____ 37

Why am I my child’s first teacher?

Head Start firmly believes that parents are the first teachers of their children.

We want you to be part of their learning, that is why we ask you to volunteer regularly in the classroom.

It is also why we come to your home to talk about your child.

It is why we want you to ask questions and give us your ideas.

We hope you take part in our programs for parents.



RESOURCE DIRECTORY

AMERICAN RED CROSS

724-962-9180

517 W. Main Street, Sharpsville, PA 16150

Emergency only (nights, holidays or weekends): 724-981-1293

Disaster services

ANGEL FOOD MINISTRIES

1-877-FOOD-MINISTRIES

www.angelfoodministries.com

Greenville: Bethel Life Worship Center

724-589-5433

www.blwc.org

Hermitage: Miracle Valley Church

724-962-5400

www.miraclevalleychurch.com

Jackson Center: Vincent UMC

724-662-5522

Sandy Lake: Sandy Lake Presb. Church

724-376-2630

Sharon: Shenango UMC

724-983-0200

www.sharonfirstumc.com

No income guidelines; food orders placed in advance (call for monthly hours)

Angel Food Ministries is a non-profit, non-denominational organization dedicated to providing grocery relief and financial support to communities throughout the United States.

ARK HOUSE (Southwest Gardens)

724-342-2751

418 Fruit Ave., Farrell, PA 16121

Homeless women/families

ASSOCIATION FOR CHILDREN WITH LEARNING DISABILITIES

724-346-5887 (or) 724-962-5589 M-TH 3:00-7:00

28 N. Pine Ave., Sharon, PA 16146

e-mail: amilliard@yahoo.com

AW/AWARE, INC. - Mercer County's Center Against Domestic & Sexual Violence

24-hr toll free hotline: 1-888-981-1457, Local/TTY hotline: 724-981-1457

Business: 724-342-4934 (M-F 8:30-4:30)

Legal Advocacy: 724-662-3800, ext. 2542

P.O. Box 612, Mercer, PA 16137

e-mail: awareinc@verizon.net

24-hr. hotline, 24-hr. accessible shelter for female victims of domestic violence and their children, individual & group supportive counseling, advocacy with county systems, medical & legal advocacy and accompaniment, and community and school prevention education. All services are free and confidential

BETTER BUSINESS BUREAU OF WESTERN PENNSYLVANIA

412-456-2700

810 Smithfield St., Pittsburgh, PA

BLUE CROSS/BLUE SHIELD SPECIAL CARE (Adults)

800-544-6679 or 800-GO-BASIC

Health insurance available at reduced rates for eligible adults

BUREAU OF PA CHILD SUPPORT ENFORCEMENT

800-932-0211

CATHOLIC CHARITIES COUNSELING & ADOPTION AGENCY

724-346-4142 M-F 8:30-5:00

995 Linden Street., Sharon, PA 16146

e-mail: sharoncccas@verizon.net

Emergency pregnancy services, foster home care, adoption, free pregnancy testing, marriage & family counseling

Free counseling in the areas of baby blues, parenting information, anxiety, and relationship problems for biological mother and/or father until baby reaches age one (1).

Project W.I.N. (Emergency baby supplies for low-income mothers - diapers, wipes, clothes, blankets, etc.)

CHILD CARE INFORMATION SERVICES (C.C.I.S.)

724-346-6171 M-F 8:00-5:00

825 Sharon-New Castle Road, Farrell, PA 16121

Subsidized funding for daycare services & information on various locations in Mercer County where daycare is available

CHILDREN'S AID SOCIETY OF MERCER COUNTY

724-662-4730 M-F 8:00-5:00 by APPOINTMENT

350 W. Market St., P.O. Box 167, Mercer, PA

e-mail: casmc@zoominternet.net

Website: www.casmc.org

Adoption, Family Life education programs, nurturing program, family-based mental health services, residential program and emergency shelter, day care (6 wks. to 12 yrs.), intensive in-home intervention services, information and referral

CHILDREN'S CENTER OF MERCER COUNTY

724-342-3738 M-F 7:00-6:00

900 N. Hermitage Rd., Hermitage, PA 16148

e-mail: ccmc@neohio.twcbc.com

Website: www.ccmcweb.com

Specialized needs day care program providing early intervention services to children birth to 5 years of age, including speech and language evaluations

CHILDREN'S HOSPITAL OF PITTSBURGH

412-692-5325

3705 Fifth Ave., Pittsburgh, PA

Casework and counseling, medical and dental care, occupational, physical and speech therapy, psychiatric services, psychological testing and evaluations for children 0-18 years of age

CITY RESCUE MISSION

724-652-4321

319 S. Croton Ave., New Castle, PA 16103

Meals, lodging, clothing, furniture, emergency food, home visitation, Inter-city youth activities and emergency housing for fire victims

Food Bank hours: Monday-Friday, 8:30–11:00 AM and 1:00–3:45 PM

Call for appointment; bring ID and proof of income

CLARK VOLUNTEER FIRE DEPARTMENT

724-962-1330

P. O. Box 61, Clark, PA 16113

COMMUNITY ACTION PARTNERSHIP OF MERCER COUNTY

724-342-6222 or 1-888-508-5216

75 S. Dock St., Sharon, PA 16146

Weatherization, housing and housing counseling, USDA Rural Housing Loan Programs, Utility Assistance program and financial counseling for home buyers.

COMMUNITY COUNSELING CENTER OF MERCER COUNTY

724-981-7141 (or) 1-866-853-7758 afternoon, some evening hours, limited sat.

2201 E. State St., Hermitage, PA 16148

77 N. Main Street, Greenville, PA 16125

15 Woodland Center Drive, Grove City, PA 16127

Website: www.cccmer.org

Individual, group and family counseling, mental health treatment, consultation and assessment

COMPREHENSIVE CHILDREN & FAMILY SERVICES

724-981-9900 (or) 1-800-630-2237 M-F 9:00-4:00 & TH 9:00-7:00

194 E. State Street, Sharon, PA 16146

e-mail: comprehensivechildrenandfamily@yahoo.com

Website: wraparound.com (or) ellwoodcity.org/comp.htm

CONSUMER CREDIT COUNSELING SERVICES OF MERCER COUNTY

724-342-6302

734 Stambaugh Avenue, Sharon, PA 16146

Free budget counseling, debt management and education

DEPENDABLE TAXI (Phil's)

724-981-7445

DIVERSIFIED FAMILY SERVICES

724-346-2123 M-F 9:00-5:00

5454 E. State Street, P.O. Box 102., Hermitage, PA 16148

e-mail: ntusinac@diversifiedfamily.org

Website: www.diversifiedfamily.org

Active parenting classes that address the issues involved with parenting

DOMESTIC RELATIONS

724-662-2404, 724-662-2405, 724-962-5711

Mercer County Courthouse, 121 N. Pitt St., Mercer, PA 16137

Provides for payment of cash support and/or medical expenses by independent spouse to dependent spouse and/or minor children. Based on number of persons to be supported and the income and expenses of each party per statewide guidelines. Possible 4-8 week waits between filing and hearing (www.childsupport.state.pa.us)
\$5.00 filing fee for new action

E.R.A.S.E. (Anti-drug coalition)

724-981-3856

211 Federal St., P.O. Box 301, Farrell, PA 16121

Counseling for drug and alcohol, tool lending library, support group and youth activities

FAMILY PLANNING SERVICES OF MERCER COUNTY

Sharon - 724-981-6250 M-TH 9:00-5:00 & Fri 9:00-4:00

87 Stambaugh Ave., Suite 1, Sharon, PA 16146

Greenville - 724-588-2272 M-F 9:00-5:00

74 Shenango St., Greenville, PA 16125

e-mail: FP-greenville@verizon.net

Grove City - 724-458-8505 (Hillcrest Medical Center)

Individual counseling and medical assistance; community education regarding family planning and related health and social services

FARRELL AREA SCHOOL DISTRICT'S EARLY INTERVENTION PROGRAM

724-509-1358 M-F 8:00-4:00

1901 Memorial Dr., Farrell, PA 16121

e-mail: pperkins@farrellareaschools.com

Classes for preschool children with developmental delays or disabilities residing in Farrell & Wheatland

Screenings, diagnostic services, information and referral services, and parent education

FARRELL FIRE DEPARTMENT

724-983-2707

500 Roemer Blvd., Farrell, PA 16121

FREDONIA VOLUNTEER FIRE DEPARTMENT

724-475-2646

46 First St., Fredonia, PA 16124

GALSA (Greenville Area Leisure Services Association)

M-TH 9:00-9:00, FRI 9:00-8:00, SAT 10:00-6:00

45 Alan Avenue, P.O. Box 244, Greenville, PA 16125

e-mail: galsa@galsa.org

Website: www.galsa.org

Provider of recreational programming, activities and special events for the Greenville community and its service area while maintaining and operating the Borough's park system.

GERALDINE APARTMENTS

724-475-4457

Fredonia, PA 16124

Low income housing (30% of income)

GOOD SHEPHERD CENTER, INC.

724-588-2210 M-F 8:30-4:30

144-46 Main St., Greenville, PA 16125

e-mail: tgscinc@yahoo.com

Food Pantry, emergency/referral services, growth opportunity seminars, the clothes closet, free clinic, volunteers; serving the Greenville area

Food Pantry hours: Monday, Thursday & Friday, 8:00 AM–12:00 PM; Tuesday & Wednesday, 8:00 AM–3:00 PM

GRACE COMMUNITY FOOD PANTRY

724-748-5972 M 1:30-4:00 & 1st M 5:30-7:00

P.O. Box 68., Grove City, PA 16127

Must reside in the Grove City School District and provide proof of income, Social Security numbers, birthdates and medical card (if applicable) for all family members

GREENVILLE FIRE DEPARTMENT

724-588-3111

111 East Ave., Greenville, PA 16125

GREENVILLE LITERACY COUNCIL

724-588-6141 or 724-589-5979

222 Main St., Greenville, PA 16125

Locations in Greenville, Jamestown and Reynolds

GREENVILLE PUBLIC LIBRARY

724-588-5490 M-TH 10:00-8:00 & F-SAT 10:00-4:00

330 Main St., Greenville, PA 16125

e-mail: gpubliclibrary@neo.rr.com

Website: www.lawrencecountylibrary.org/mercer/greenville/main.htm

GROVE CITY COLLEGE

724-458-2000

100 Campus Dr., Grove City PA 16127

GROVE CITY COMMUNITY LIBRARY

724-458-7320 M-T-W 10:00-5:00, TH-FR 10:00-8:00 & SAT 10:00-5:00

Fax # 724-458-7332

125 W. Main St., Grove City, PA 16127

e-mail: grovepl@zoominternet.net

Website: www.grovecitypalibrary.org

GROVE CITY EDUCATION CENTER FOR ADULTS

724-458-7270

Grove City Library, 125 W. Main St., Grove City, PA 16127

GROVE CITY MEDICAL CENTER

724-458-5442

631 N. Broad Street, Grove City, PA 16127

e-mail: dhenley@gcmcpa.org

Website: www.gcmcpa.org

GROVE CITY VOLUNTEER FIRE DEPARTMENT

724-458-5311

146 N. Broad St., Grove City, PA 16127

HELPING HANDS

724-376-3231

51 Lake St., Stoneboro, PA 16153

Food Pantry/Bread Shelf, information and referral, Thrift Store, rental/utility assistance, financial guidance, Bread Shelf (open to the public) and adult GED classes

Satellite for Salvation Army Services: Jackson Center, Hadley, Stoneboro, Clarks Mills and Fredonia areas

Food Pantry hours: Monday, Tuesday, Thursday & Friday – 9:00 AM-4:00 PM (1st time users need to call for appointment)

HEMPFIELD TOWNSHIP VOLUNTEER FIRE DEPARTMENT

724-588-6001

20 6th St., Greenville, PA 16125

HERMITAGE VOLUNTEER FIRE DEPARTMENT

724-342-0669

2511 Highland Rd., Hermitage, PA 16148

IMMACULATE HEART OF MARY CHURCH (Sharing Shed)

724-662-2999 2nd & 4th Sat. 10:00-12:00 & emergency as needed

100 Penn Ave., Mercer, PA 16137

JAMESTOWN FOOD PANTRY

724-927-6069

Denver St., Jamestown, PA 16134

Serving residents living in zip code areas: 16110, 16111, 16131, and 16134

Open 1st & 3rd Friday of every month from 9:00–11:00 AM

Must show proof of residency and provide social security numbers for each household member

JB TAXI

724-981-6666

JEFFERSON TOWNSHIP VOLUNTEER FIRE DEPARTMENT

724-662-4777

1648 Bend Road, Mercer, PA 16137

JOSHUA'S HAVEN CITY MISSION

724-983-0304

205 Bank Place, Sharon, PA 16146

Homeless shelter for men.

KEYSTONE BLIND ASSOCIATION

724-347-5501 M-F 8:30-4:30
1230 Stambaugh Ave., Sharon, PA 16146
e-mail: kba@keystoneblind.org
Website: www.keystoneblind.org

Offers blind and visually handicapped Mercer County residents services designed to maintain and improve their quality of life and to actively work for the prevention of blindness

KEYSTONE EDUCATION CHARTER SCHOOL

724-588-2511 M-F 7:30-3:00
425 s. Good Hope Road, Greenville, PA 16125

LAKEVIEW AREA PUBLIC LIBRARY

724-376-4217 or 724-376-7246
3271 S. Main St., Sandy Lake, PA 16145

LA LECHE LEAGUE

724-983-5518 or 1-800-346-7997

Breastfeeding support

LAUREL TECHNICAL INSTITUTE

724-983-0700
335 Boyd Dr., Sharon, PA 16146

LITERACY COUNCIL OF MERCER COUNTY

724-981-5494 or 724-588-6141 5 days week at 4 different sites
222 Main Street, Greenville, PA 16125
e-mail: info@the-literacy-council.org
Website: www.the-literacy-council.org

LIVING ROOM LEARNING (Greenville Literacy Council)

724-588-6141
222 Main St., Greenville, PA 16125

Adult education program offered in the home for 12 weeks

MEALS ON WHEELS

724-342-2042 8:45-12:00
396 Buhl Blvd., Sharon, PA 16146

Provides nutritious meals for people who are unable to shop and/or cook for themselves because of emotional or physical problem
Must reside within a 10 mile radius of the Sharon area. **Fee for service**

MERCER AREA LIBRARY

724-662-4233 M & FR 9:30-5:00, T-W-TH 9:30-8:00, SAT 8:00-3:00 (summer 8-12)
Fax # 724-662-8893
143 N. Pitt St., Mercer, PA 16137
e-mail: mercerarealib@htol.net
Website: www.mercerarealibrary.net

MERCER COUNTY BEHAVIORIAL HEALTH COMMISSION (BHC)

724-662-1550 M-F 8:30-4:30
8406 Sharon-Mercer Rd, Mercer, PA 16137
e-mail: melissa.hollen@mercercountybhc.org

Provides early intervention for children birth to three years of age with developmental delays

MENTAL HEALTH SERVICES: Central Intake – 724-662-2230
After hours crisis phone # 724-981-4555

MERCER COUNTY BOARD OF ASSISTANCE (DPW)

724-983-5000 M-F 7:30-5:00
2236 Highland Rd., Hermitage, PA 16148
e-mail: c-mercer@state.pa.us

Financial assistance (S.S.I., Federal Food Stamps, Medical Assistance, etc.) for Mercer County residents, Emergency Energy Assistance

MERCER COUNTY CAREER CENTER

724-662-3000
776 Greenville Rd., P.O. Box 152, Mercer, PA 16137

MERCER COUNTY CAREER LINK (Formerly J.T.P.A)

724-347-9257 M-T-TH-F 8:00-4:30 & W 10:00-4:30
217 W. State St., Sharon, PA 16146
e-mail: VDARCANG@state.pa.us
Website: www.pacareerlink.state.pa.us

Employment or educational training opportunities for low-income or dislocated individuals
Other services include veteran services, vocational rehabilitation, employment assistance, and job training

MERCER COUNTY CAREER CENTER PRESCHOOL (Personal Care Classes)

724-662-3000 T-W-TH 8:30-10:30 & 12:30-2:30
776 Greenville Road, Mercer, PA 16137
e-mail: cmoore@mccc.tec.pa.us

MERCER COUNTY CASA

724-342-2841

Community volunteers provided to abused and neglected children within the court system

MERCER COUNTY CHILDREN AND YOUTH SERVICES (CYS)

724-662-2703 M-F 8:30-4:30

(Emergency Number – 724-662-3112)

8425 Sharon-Mercer Rd., Mercer, PA 16137

e-mail: mdaniels@mcc.co.mercer.pa.us

Adoption, counseling/intervention action, foster family services, general child caring facilities, group home services, homemaker services, information and referrals, planning and shelter care services

MERCER COUNTY COMMUNITY TRANSIT

724-981-6222 or 800-222-8797

2495 Highland Rd., Hermitage, PA 16148

Transportation to health cares appointments for public assistance and medical cardholders, senior citizen; fee for others

MERCER COUNTY COOPERATIVE EXTENSION

724-662-3141 (or) 724-342-4036 M-F 8:30-4:30

P.O. Box 530, 463 N. Perry Highway,, Mercer, PA 16137

e-mail: jld28@psu.edu (or) vam@psu.edu

Website: <http://mercerc.extension.psu.edu>

Provides educational programs in nutrition, parenting, child development, family relations, money-management, housing, energy and agriculture

MERCER COUNTY FAMILY CENTERS

Farrell/Wheatland – 724-509-1351

panthony@farrellareaschools.com

Greenville – 724-588-8570

svalimont@greenville.k12.pa.us

Sharon – 724-983-1118

alan_nathan@sharon.k12.pa.us

Advocate for families, parent education, information and referral, Toy Lending Library and group meetings

Sharon Family Center – has a Children’s Clothing Closet for Sharon residents or anyone in need (emergency basis).

MERCER COUNTY HABITAT FOR HUMANITY

724-347-3587

129 Franklin Street, Sharon, PA 16146

MERCER COUNTY HOUSING AUTHORITY

724-342-4000 M-W-TH-F 8:30-4:30 & TUES 10:00-4:30
80 Jefferson Avenue, Sharon, PA 16146
e-mail: mchaze@earthlink.net

MERCER COUNTY JUVENILE ADVISORY COUNCIL, INC

M-F 8:30-4:30
30 Snyder Road, P.O. Box 1084, Hermitage, PA 16148
e-mail: mcjac@mcjac.org
Website: www.mcjac.org

MERCER COUNTY STATE HEALTH CENTER

724-662-4000 M-F 8:00-4:30
25 McQuiston Drive, Jackson Center, PA 16133

MERCER EAST END VOLUNTEER FIRE DEPARTMENT

724-662-3290
P. O. Box 188, Mercer, PA 16137

MIDWESTERN INTERMEDIATE UNIT IV

724-458-6700 or 800-942-8035
453 Maple St., Grove City, PA 16127-2399

Classes for preschool children ages 4 & 5, diagnostic services, information and referral services, physical therapy, psychological testing and evaluation for Mercer County residents

MINORITY HEALTH ADVOCACY

724-981-3856
211 Federal St., Farrell, PA 16121

NEED-A-PHYSICIAN (Sharon Regional Health System)

724-983-3926
740 E. State St., Sharon, PA 16146

Nurses provide information on specific illnesses or first aid suggestions

NEIGHBORHOOD-BASED FAMILY INTERVENTION CENTER

724-347-0190 7 days week/24 hrs day
912 E. State St., Sharon, PA 16146
e-mail: nbfic@infonline.net
Website: www.casmerc.org

Works with court-order adjudicated/delinquent youth and their families
Male involvement programs

NEIGHBORHOOD NETWORK EDUCATION TEAM

724-646-0404

325 Reynolds West Estates, Greenville, PA 16125

Adult Computer Literacy classes

NORTH SHARON VOLUNTEER FIRE COMPANY

724-346-9037

469 Thornton Ave., Sharon, PA 16146

NORTHWEST LEGAL SERVICES

724-346-6112 or 800-665-6957

1013 Roemer Blvd., Farrell, PA 16121

Legal representative in various civil matters to qualifying individuals

OFFICE OF VOCATIONAL REHABILITATION

724-347-9257 X 222

217 W. State St., Sharon, PA 16146

Provides vocational rehabilitation services to eligible citizens in order to maintain or gain employment. Possible services include initial evaluation of eligibility, vocational guidance counseling, possible job training, physical/mental restoration and job placement services

PAOLETTA PSYCHOLOGICAL SERVICES

724-662-7202 M 8:00-5:00, T-W-TH 8:00-8:00, FRI 8:00-6:00

456 N. Pitt Street, Mercer, PA 16137

e-mail: dawnh@svol.net

Website: www.paoletta.org

PARENT NETWORK INC.

724-347-1002 (or) 724-347-6704 M-F 9:00-5:00

100 W. Ridge Avenue, Sharpsville, PA 16150

e-mail: pninc@hotmail.com

PARENTS OF CHILDREN WITH SPECIAL NEEDS (Sharon Regional Health Information Center)

724-983-5518 or 800-346-7997

740 East State Street, Sharon, PA 16146

Support group for parents of children with special needs, including developmental delays, learning disabilities, ADD/ADHS, and physical disabilities. Parents meet to share common concerns and solutions related to parenting children with special needs. Provides education, informal discussions on pertinent topics such as coping skills, family relationships, self-esteem for children, school placement, and dealing with professionals. Meets the 2nd and 4th Wednesday each month at 12:30 PM

PATAGONIA VOLUNTEER FIRE DEPARTMENT

724-342-0776

119 Superior St., Hermitage, PA 16148

PENN POWER C.A.R.E.S. PROGRAM

800-720-3600

PENN STATE-SHENANGO CAMPUS

724-983-2800

147 Shenango Ave., Sharon, PA 16146

PENNSYLVANIA CHILDREN'S HEALTH INSURANCE PROGRAM (C.H.I.P.)

800-986-KIDS (5437)

Provides free or low cost health insurance to uninsured children whose families earn too much to qualify for medical assistance, but not enough to purchase health insurance

PENNSYLVANIA DEPARTMENT OF HEALTH

724-662-4000

25 McQuiston Dr., Jackson Center, PA 16133

Provides Well Baby Clinics and AIDS Testing

PENNSYLVANIA EMERGENCY MANAGEMENT AGENCY

717-783-5061

Office of Fire Safety Services, 2605 Interstate Dr., Harrisburg, PA 17110

PENNSYLVANIA LAWYER REFERRAL SERVICE

800-692-7375

PENNSYLVANIA PUBLIC UTILITY (Water, Gas, Electric)

800-692-7380

PENNSYLVANIA STATE POLICE (Mercer Barracks)

724-662-6162

Free car seat inspections on the third Wednesday of each month between 12:00 - 4:00 pm. Recommend calling for appointment.

PEOPLE IN NEED

Farrell— 724-346-1024 M & W 9:00-4:00, FRI 9:00-2:00
602 Roemer Blvd., Farrell, PA 16121
Website: www.PINPA.ORG

Sharon—724-981-9900 T & TH 9:00-4:00
194 E. State St., Sharon, PA 16146
Website: www.PINPA.ORG

Provides counseling, support services and baby supplies up to age one

PINE TOWNSHIP ENGINE COMPANY

724-458-0636
P. O. Box 627, Grove City, PA 16127

POISON CONTROL CENTER

800-222-1222

PREGNANCY RESOURCE CENTER

724-658-6329 M-F 1:00-5:00
321 N. Jefferson St., P.O. Box 7734, New Castle, PA 16107

Free pregnancy tests. Clothing and supplies for pregnant women and infants/toddlers up to age two. Earn While You Learn program

PRESCHOOL CONNECTION

800-345-0033

Information and referral for families with concerns about their child's physical or emotional development

PRIMARY HEALTH NETWORK

724-342-3002 M-F 8:30-5:00
100 Shenango St., Sharon, PA 16148
e-mail: spiccirilli@primaryhealth.net
Website: www.primary-health.net

Services include Family Practice, Pediatrics, Dentistry, Podiatry, Internal Medicine, Ear, Nose, Throat and Allergy Care, OB/GYN, Pain Management, Optometry and Hypnotherapy

PRINCE OF PEACE

724-346-5777 M & W 9:00-5:00 / T-TH-F 9:00-4:00

502 Darr Ave., Farrell, PA 16121

e-mail: popc@princeofpeacecenter.org

Website: www.princeofpeacecenter.org

Food Pantry, Soup Kitchen, clothing, emergency assistance, counseling, energy assistance and G.E.D. Others services include: case management for the homeless or transitionally homeless and HOPE Advocacy (intensive case management to build more stable families and homes)

Food Pantry hours: 3rd Wednesday of each month, 9:30 AM-12:30 PM & 4:00-6:00 PM

PROTECTION FROM ABUSE

Prothonotary Office: 724-662-3800

Mercer County Court House: 724-962-5711

Immediate protection from physical abuse or assault from spouse and/or minor children

RESPIRE CARE

724-981-7141

Specialized childcare for children with special emotional needs

SALVATION ARMY

Sharon – 724-347-5537

660 Fisher Hill and Hall Ave., Sharon, PA 16146

Must provide proof of income & Sharon residency (utility bills), Social Security number of all family members, birth certificate for all children under age 12

Food Pantry hours: last Thursday of each month, 9:30-11:30 AM & 6:00 PM

Greenville – 724-588-5190

211 Main Street, Greenville, PA 16125

Must provide proof of income & Reynolds/Greenville residency (utility bills), Social Security number of all family members, birth certificate for all children under age 12

Food Pantry hours: Monday, Tuesday, Thursday & Friday, 1:15-2:30 PM

Grove City – 724-458-9840

717 W. Main Street, Grove City, PA 16127

Crisis Counseling, winter clothing, emergency housing & food, fuel assistance

SHARING AND CARING FOR PERSONS IN NEED OF MERCER COUNTY, INC.

724-981-6738

Helps defray some of the daily expenses for transplant candidates and their families

SHARON COMMUNITY HEALTH CENTER

724-347-2429

89 Elm Ave., Sharon, PA 16146

Provides routine primary care and preventative health services to individuals who receive medical assistance or who are uninsured or underinsured

SHARON FIRE DEPARTMENT

724-983-3213

155 W. Connelly Blvd., Sharon, PA 16146

SHARON REGIONAL BEHAVIORIAL HEALTH SERVICES

724-983-5454 or 1-800-950-9982

2375 Garden Way, Sharon, PA 16146

A full spectrum of mental health and substance abuse services to residents of Mercer County and surrounding areas.

Services include: Adult, child, adolescent and geriatric psychiatric inpatient services, wrap-around services, outpatient mental health and substance abuse counseling, outreach and prevention

SHARON REGIONAL BREAST CARE CENTER

724-983-3931

2435 Garden Way, Hermitage, PA 16148

e-mail: breastcare@srhs-pa.org

SHARON REGIONAL DIAGNOSTIC & IMAGING CENTER

724-983-3931

2435 Garden Way, Hermitage, PA 16148

www.sharonregional.com

SHARON REGIONAL HEALTH SYSTEM

724-983-3911

740 E. State St., Sharon, PA 16146

SHARPSVILLE VOLUNTEER FIRE DEPARTMENT

724-962-7846

214 W. Main St., P. O. Box 24, Sharpsville, PA 16150

SHENANGO VALLEY COMMUNITY LIBRARY

724-981-4360 M-TH 10:00-8:00, FRI & SAT 10:00-5:00

Fax # 724-981-5208

11 N. Sharpsville Ave., Sharon, PA 16146

SHENANGO VALLEY SHUTTLE BUS

724-981-1561

SHENANGO VALLEY URBAN LEAGUE

724-981-6154 (or) 814-676-0099 M-T-TH-F 8:00-4:00, W 11:00-7:00

601 Indiana Ave., Farrell, PA 16121

e-mail: wic@adelphia.net

Education, employment and housing counseling

Emergency rent/mortgage assistance

Community housing services, Immunizations, Sickle Cell Anemia testing for all ages, ERSDT screening, and WIC (a nutritional assistance program for women, infants, and children)

SOCIAL SECURITY ADMINISTRATION

800-772-1213 (or) 724-346-5904 ext. 212 M-F 8:45-3:45

295 N. Kerrwood, Hermitage, PA 16148

Website: www.socialsecurity.gov

SOUTH PYMATUNING TOWNSHIP VOLUNTEER FIRE DEPARTMENT, STATION #78

724-962-9481

3505 Tamarack Dr., P. O. Box 563, Sharpsville, PA 16150

SPECIAL KIDS NETWORK

800-986-4550

Counselors help families locate services for children, regardless of age, such as disability/special education information, assertive technology, recreational resources, etc.

SPRINGFIELD TOWNSHIP VOLUNTEER FIRE DEPARTMENT

724-748-3597

P. O. Box 222, Mercer, PA 16137

ST. JOHN'S EPISCOPAL CHURCH

724-981-8131

226 W. State St., Sharon, PA 16146

Food Pantry hours: 1st & 3rd Thursday, 1:30-4:00 PM

STD CLINIC OF MERCER COUNTY (at Family Planning)

724-981-6250 TUES 5:30-6:30

87 Stambaugh Avenue, Suite 1, Sharon, PA 16146

STEY NEVANT LIBRARY

724-983-2714 M & TH 11:00-7:00, T & W 10:00-6:00, SAT 8:00-12:00
1000 Roemer Blvd., Farrell, PA 16121
e-mail: muggs-snp1@juno.com

STONEBORO VOLUNTEER FIRE COMPANY

724-376-2396
P. O. Box 576, Stoneboro, PA 16153

THE WOMEN'S CENTER (Sharon Regional Health System)

724-983-3944
740 E. State St., Sharon, PA 16146

THIEL COLLEGE

724-589-2000
College Ave., Greenville, PA 16125

TRANSFER VOLUNTEER FIRE DEPARTMENT

724-646-2659
P. O. Box 105, Transfer, PA 16154

UNITED WAY OF MERCER COUNTY

724-981-1884
300 W. State Street, Sharon, PA 16146

UNIVERSITY of PITTSBURGH MEDICAL CENTER (UPMC)

HORIZON HOSPITAL

888-447-1122
Greenville Campus - 724-588-2100
110 N. Main St., Greenville, PA 16125
Shenango Valley Campus - 724-981-3500
2200 Memorial Drive, Farrell, PA 16121

UPMC WOMANCARE CENTER

724-347-7700 or 1-866-347-7700
875 N. Hermitage Rd., Hermitage, PA 16148

VICTIM / WITNESS PROGRAM

724-662-3800 EXT. 2287 M-F 8:30-4:30
209 County Courthouse, Mercer, PA 16137
e-mail: jmooney@mcc.co.mercer.pa.us
Website: www.mercer.co.merlink.org

VOCATIONAL AND PSYCHOLOGICAL SERVICES

724-982-4791

Psychological testing, counseling, and TSS services. Ages 2 to adult.

WEST CENTRAL CENTER FOR THE DEAF

724-342-3323, TTY-724-981-4327

2201 E. State Street, Hermitage, PA 16148

Provides behavior and emotional health care services to children and adolescents (birth-22 year olds) who are deaf or hard-of-hearing or children with parents who are deaf or hard-of-hearing

WEST MIDDLESEX VOLUNTEER FIRE DEPARTMENT

724-528-2615

25 North St., West Middlesex, PA 16159

WEST SALEM VOLUNTEER FIRE DEPARTMENT

724-588-3945

625 Vernon Rd., Greenville, PA 16125

WHEATLAND VOLUNTEER FIRE DEPARTMENT

724-347-5367

P. O. Box 49, Wheatland, PA 16161

911 - Emergency Number for all calls

DENTISTS & DENTAL CLINICS/CENTERS

ALLIED DENTAL GROUP

724-794-2224
234 S. Main Street
Slippery Rock, PA 16057

DR. CARL BELL

724-662-5101
209 S. Pitt St.
Mercer, PA 16137

DR. THOMAS BOST

724-588-3012
126 College Ave.
Greenville, PA 16125

DR. SUSAN CALDERBANK

724-588-1600
43 Clinton St.
Greenville, PA 16125

DR. DENNIS CHARLTON

724-376-7161
3242 South Main St.
Sandy Lake, PA 16145

CHILDREN'S HOSPITAL DENTAL CLINIC

412-692-5440
Pittsburgh, PA

DR. CHINAWALLA

724-776-9033
Cranberry, PA

DR. DIETZ

724-652-7491
2210 Wilmington Road
New Castle, PA 16101

DR. MARK ELISCO

724-981-1223
3110 Highland Rd.
Hermitage, PA 16148



FARRELL DENTAL CLINIC, DRS. BEAL, COSGROVE, MORGAN AND YOUNG

724-981-1721
350 Sharon-New Castle Rd.
Farrell, PA 16121

DR. DUANE GRUBER

724-588-9520
37 Hadley Rd.
Greenville, PA 16125

DR. CHRISTIAN JEFFRIES

724-981-1721
350 Sharon-New Castle Rd.
Farrell, PA 16121

DR. KENNEY

724-652-7491
New Castle, PA

DR. JAMES KOLLAR

724-981-4270
2200 East State St.
Hermitage, PA 16148

DR. THOMAS KOSICK

724-376-7161
3242 South Main St.
Sandy Lake, PA 16145

DR. ANDREW KRANTZ

724-458-4500
1007 West Main St.
Grove City, PA 16127

DR. THOMAS LAH

724-458-9422
1235 S. Center St. Ext.
Grove City, PA 16127

DR. JOHN MANGANELLO

724-588-3012
126 College Ave.
Greenville, PA 16125

DR. ERIC MONG
724-588-8910
206 Main St.
Greenville, PA 16125

NEW CASTLE DENTAL CENTER
724-656-3486
1112 S. Mill Street
New Castle, PA 16105

DR. JAMES ROSEN
724-981-8871
701 N. Hermitage Road
Hermitage, PA 16148

DR. ROWLES
814-587-2438
Conneautville, PA



DR. RICHARD SHELESTAK
724-528-1515
3115 Main St.
West Middlesex, PA 16159

DR. KENNETH WOODS
724-946-3534
212 W. Vine St.
New Wilmington, PA 16142

DR. R. WOODS
724-588-2750
282 Main St.
Greenville, PA 16125

DR. SUSAN YOUNG
724-981-1721
350 Sharon-New Castle Rd.
Farrell, PA 16121

SMILE DENTAL PROGRAM
1-888-833-8441

OBSTETRICIANS:

DUNDORE-HIMES OB-GYN ASSOCIATES
724-458-7737
47 N. Broad Street
Grove City, PA 16127

DR. JOHN GALLAGHER
724-981-4434
1 Dayton Way
Sharon, PA 16146

DR. MICHELLE WRIGHT
Primary Health Network Park Place
350 Sharon-New Castle Road
Farrell, PA 16121

DR. BRENT HURD & MICHELLE TATE
724-981-8070
350 Sharon-New Castle Road
Farrell, PA 16121



DR. REBECCA HANIGOSKY
724-981-4960
480 N. Kerwood Drive, Suite 103
Hermitage, PA 16148

JANICE AGNEW, MIDWIFE
724-981-8070
350 Sharon-New Castle Road
Farrell, PA 16121

DR. JOSEPH MEYN &
DR. DAVID McFADDEN
724-588-4240
90 Shenango Street
Greenville, PA 16125

PHYSICIANS & PEDIATRICIANS



DR. ALLISON ANGOTT
724-981-0825
3110 Highland Rd.
Hermitage, PA 16148

DR. DOINA ANTONESCU
724-981-2246
602 Roemer Blvd.
Farrell, PA 16121

DR. GEORGHE ANTONESCU
724-654-2776
2655 Ellwood Road
New Castle, PA 16101

DR. BETTY JEAN BARDELLA
724-932-2299
865 E. Jamestown Road
Jamestown, PA 16134

DR. DANIEL BEE & DR. HEIDI BEE
724-981-0825
3110 Highland Rd.
Hermitage, PA 16148

DR. PAUL CHLPKA &
DR LAURA PASCI
724-346-6494
Helping Hands Pediatrics
585 East State St.
Sharon, PA 16146

DR. JENNIFER CIAMBOTTI
724-962-3528
6 E. Shenango St.
Sharpsville, PA 16150

DR. ROBERT CICUTO
724-346-1234
2213 Shenango Valley Frwy.
Hermitage, PA 16148

DR. JOHN CUNNINGHAM
724-342-4052
197 W. Silver Street
Sharon, PA 16146

Kids Way Pediatric-Linden Pointe:
DR. CHERYL DUFFY &
DR. JOSEPH FRANK
724-981-1219
3068 Innovation Way
Hermitage, PA 16148

DR. JOYCE ECKARD
724-962-3553
1291 Rutledge Rd., PO Box 114
Transfer, PA 16154

DR. HOWARD ECKSTEIN
724-981-2246
602 Roemer Blvd.
Farrell, PA 16121

Family Healthcare Partners:
DR. DAVID G. HOYT
724-662-4990
400 W. Butler St., Mercer, PA

DR. SUSAN FEDEROFF
724-735-4241
321 E. Mercer St., Harrisville, PA

DR. DAVID W. HEFNER
724-458-5872
675 N. Broad St. Ext., Suite 5
Grove City, PA 16127

DR. EDWARD G. SMITH
DR. CHRIS SPRANDO
724-458-4950
420 Hillcrest Ave.,
Grove City, PA 16127

FARRELL PRIMARY CARE
724-981-8070
350 Sharon-New Castle Road
Farrell, PA 16121

DR. LYNN JOHNSON
724-932-2299
865 E. Jamestown Road.
Jamestown, PA 16134

DR. LYNN JOHNSON
724-253-3428
3393 Perry Highway
Sheakleyville, PA 16151

DR. AMELITA MAMARIL
724-658-5437
3315 Wilmington Road
New Castle, PA 16105

DR. ROBERT MARTSOLF
724-342-6604
Sharon Medical Group
Sharon, PA 16146

DR. LYNNE MCCRILLIS
724-588-4240
Greenville Med. Center
90 Shenango St.
Greenville, PA 16125

DR. MICHAEL MESSINA
724-981-1940
197 Silver Street, Suite 10
Sharon, PA 16146

Hermitage Community Medicine:

DR. MICHELLE THOMPSON
DR. DEBRA SNYDER
DR. CURTIS JANTZI
724-347-4099
705 Brookshire Dr.
Hermitage, PA 16148

DR. SCOTT MORGAN
724-662-4155
Mercer Family Med. Center
405 Greenville Rd.
Mercer, PA 16137

DR. ROBERT MULTARI
724-981-2246
602 Roemer Blvd.
Farrell, PA 16121

DR. ROBERT D. MULTARI
724-981-3731
2120 Likens Lane
Farrell, PA 16121

PRIMARY HEALTH
724-981-2246
220 N. Buhl Farm Drive
Hermitage, PA 16148

DR. JOEL NYSTROM
724-962-3553
1291 Rutledge Rd.
Transfer, PA 16154

DR. RICHARD PAPA
724-645-9910
183 Enclave Drive
New Castle, PA 16101

DR. THOMAS PINEO
724-588-4240
Greenville Med. Center
90 Shenango St.
Greenville, PA 16125

DR. GEORGE REEHER
724-588-4240
Greenville Med. Center
90 Shenango St.
Greenville, PA 16125

DR. ARUN SAWARDEKAR
724-458-8044
635 W. Main Street
Grove City, PA 16127

DR. SHUBHADA SAWARDEKAR
724-458-7005
201-C Erie Street
Grove City, PA 16127

DR. KARY SCHROYER
New Wilmington Family Medicine
565 W. Neshannock
New Wilmington, PA 16142

DR. BENJAMIN SHIPTON
724-662-2650
737 Greenville Rd.
Mercer, PA 16137

STIGLIANO FAMILY PRACTICE

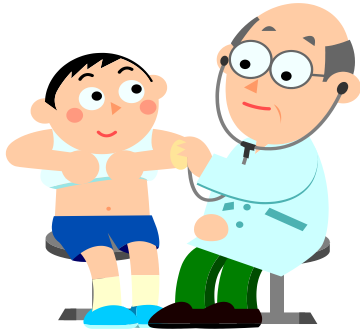
724-342-5335
3140 Highland Rd.
Hermitage, PA 16148

DR. DONALD STOUDT

724-347-7749
69 Elm Avenue
Sharon, PA 16146

DR. ANTHONY UBERTI

724-946-8979
New Wilmington Family Medicine
565 W. Neshannock
New Wilmington, PA 16142





Mercer County Head Start

Main Office

1901 Memorial Drive

Farrell, PA 16121

724-346-4482

Toll Free # 1-866-284-1059

Fax # 724-346-4431

Website: www.mchs-ehs.org

E-mail: info@mchs-ehs.org

Mercer County Early Head Start

Main Office

120 Elm Avenue

Sharon, PA 16146

724-342-3734

Toll Free # 1-866-250-4527

Fax # 724-342-3771

Website: www.mchs-ehs.org

E-Mail: info@mchs-ehs.org